



# CHILD PROTECTION AND SAFEGUARDING POLICY

## ME, YOU & US

### *Safeguarding is everyone's responsibility*

#### Key Personnel

Role	Name	Email	Telephone
Designated Safeguarding Lead (DSL)*/**	Simon France	<a href="mailto:office@standrews.dsat.org.uk">office@standrews.dsat.org.uk</a>	01305 832346
Deputy DSL(s)*/**	Jay David Amy Belcher Paul Rogers	<a href="mailto:office@standrews.dsat.org.uk">office@standrews.dsat.org.uk</a>	01305 832346
Headteacher*	Simon France	<a href="mailto:office@standrews.dsat.org.uk">office@standrews.dsat.org.uk</a>	01305 832346
Online safety Co-ordinator	Jay David	<a href="mailto:office@standrews.dsat.org.uk">office@standrews.dsat.org.uk</a>	01305 832346
Chair of Governors*	Stephen Mason	<a href="mailto:office@standrews.dsat.org.uk">office@standrews.dsat.org.uk</a>	01305 832346
Safeguarding Governor	Paul Rogers	<a href="mailto:office@standrews.dsat.org.uk">office@standrews.dsat.org.uk</a>	01305 832346
DSAT Trust DSL	Jo Hicks, Deputy CEO	<a href="mailto:office@dsat.org.uk">office@dsat.org.uk</a>	01722 548519
DSAT Trust DDSL	Mark Lacey, CEO Regional Directors Jane Dhillon Kate Masters Holly Doswell	<a href="mailto:office@dsat.org.uk">office@dsat.org.uk</a>	01722 548519
DSAT Safeguarding Trustee	Rosemary Tong	<a href="mailto:office@dsat.org.uk">office@dsat.org.uk</a>	01722 548519

If you have a safeguarding concern about the conduct of a DSL, DDSL, a Headteacher, a member of our Trust services team or one of our Trustees, please email [safeguarding@dsat.org.uk](mailto:safeguarding@dsat.org.uk).

*\*Out of hours contact details will be made available to staff*

*\*\*Any changes to key personnel/holiday/emergency contacts will be shared with the appropriate agencies and LA safeguarding partnerships*

*Note: All content should be read, adjusted and personalised according to your school's profile, procedures and practices. This policy should be adapted and adopted in conjunction with the latest Keeping Children Safe in Education.*

*Disclaimer: The Diocese of Salisbury Academy Trust (DSAT), working in partnership with Devon Education Services (DES) makes every effort to ensure that the information in this document is accurate and up to date. If errors are brought to our attention, we will correct them as soon as practicable. Nevertheless, we cannot accept responsibility for any loss, damage or inconvenience caused as a result of reliance on any content in this publication.*

Policy Date: September 2025

Review Date: September 2026

*This policy is to be adapted by each school*

## Contents

<b>CHILD PROTECTION AND SAFEGUARDING POLICY</b>	
Subject	
1.	Safeguarding Statement
2.	Terminology
3.	Safeguarding Legislation and Guidance
4.	Policy Principles, Aims and Values
5.	Safe School, Safe Staff
6.	Roles and Responsibilities
7.	Confidentiality
8.	Recognising and Responding to Safeguarding Concerns
9.	Children Who Are Particularly Vulnerable
10.	Whistleblowing
11.	Allegations Against Staff
12.	Physical Intervention
13.	Confidentiality, Information Sharing and GDPR
14.	Policy Links
15.	Summary of Changes
<b>APPENDICES</b>	
App 1.	Categories of Abuse
App 2.	Anti-Bullying / Cyberbullying
App 3.	Bullying, Prejudice and Racist Incidents
App 4.	Radicalisation and Extremism
App 5.	Domestic Abuse (including Operation Encompass)
App 6.	Exploitation (including CSE, CCE and County Lines)
App 7.	Female Genital Mutilation
App 8.	Forced Marriage
App 9.	Honour Based Abuse
App 10.	One Chance Rule
App 11.	Mental Health
App 12.	Private Fostering Arrangements
App 13.	Looked After Children & Previously Looked After Children
App 14.	Children Missing Education and Children Absent from Education
App 15.	Child on Child Abuse (including Sexual Violence, Sexual Harassment and HSB)
App 16.	Online Safety
App 17.	Youth Produced Sexual Imagery (Sexting)
App 18.	Arrangements for safeguarding children on trips and visits and clubs run by external providers
App 19.	Additional Resources
App 20.	Local Authority Safeguarding Hub contacts

## **This is the Child Protection Policy for St Andrew's CE Primary School**

### **How we create a culture in which all children are safeguarded in our community**

Everyone working in St Andrew's CE Primary School or for our school must share the objective to help keep children

and young people safe by:

- Providing a safe environment for children and young people to learn and develop in our school setting;
- Identifying and responding to 'early help' needs of children and families;
- Identifying children and young people who are suffering or likely to suffer significant harm, and
- taking appropriate action with the aim of making sure they are kept safe both at home and in our school setting;
- Maintaining a culture of vigilance, professional curiosity and an attitude of 'It could happen here'
- Ensuring the whole community knows that 'Safeguarding is everyone's responsibility'

### **The specific challenges that we face in our community**

Weymouth & Portland is an area of high social deprivation. Littlemoor – in which many of our families reside – is one of the highest national areas of deprivations. This means that the school serves a community with lower than national income averages, as well as high levels of mental health issues in families and many children who are living in single-parent or mixed families. A significant number of families reside in poor standard housing and temporary accommodation.

### **The partners we work with to ensure our children are safe**

The school works with a number of external safeguarding agencies. Primarily, all immediate or significant concerns are raised with Dorset CHAD (multi-agency safeguard hub). We also have links with Dorset Children's Services and with the Chesil Family Partnership Zone which support with Early Help. At times, when appropriate, we obtain support from agencies such as, CAMHSS, Dorset Families Matter and other local support networks. We also engage with preventative agencies such as the NSPCC and Dorset Police Safe School Communities Team on Online Safety for pupils and parents. We are supported professionally by Devon Education Services (DES) and seek advice and guidance from them.

### **How we work with parents to ensure that all children are safe**

The school uses the website to provide parents and the local community with information about policies, practices and local support. We offer training to parents on online safety and keeping children safe. Our Pastoral Team, along with the safeguard leads, liaise with families to offer support and advice – this can be school initiated or requested from families. Parents can also contact the Dorset LADO if they have concerns about the conduct of staff members.

### **How we work with staff to ensure that this policy is followed**

All staff are given whole school safeguarding training annually by the DSL. This is supplemented by whole staff training given by external trainers recommended by the Dorset Safeguarding Team or Devon Education Services every three years. When appropriate staff are also trained on specific issues – such as online safety, radicalisation and CSE. Safeguard Leads are trained to a Level 3 standard and have regular updates from the LCSB. Annually, all staff must sign that they have read and understood key safeguarding information given to them; including the Child Protection Policy, Summary of Keeping Children Safe in Education and Code of Conduct. Further updates are given in staff meetings and further information on specific aspects of safeguarding are kept for reference on the Safeguarding Board. Reading this policy annually. Reading KCSIE Part 1 annually Staff induction and refresher training Regular safeguarding briefings in professional development meetings

Reading this policy annually

Reading KCSIE Part 1 annually

Staff induction and refresher training

Regular safeguarding briefings in professional development meetings

### Safeguarding Poster to be displayed in key places across the school



DSL  
**Simon France**



DDSL  
**Jay David**



DDSL  
**Amy Belcher**



DDSL  
**Paul Rogers**

If you are concerned about a child's safety or [well-being](#) please contact our safeguarding team.



The child protection policy for academies within the Diocese of Salisbury Academy Trust is based on a template provided by Devon Education Services (DES), our safeguarding advisors; it reflects Inter-Agency Safeguarding Procedures and the latest versions of national statutory guidance: 'Working Together to Safeguard Children' and 'Keeping Children Safe in Education'. It is adapted as required to suit the needs of our Wiltshire and Dorset schools and to comply with the similar procedures of the Local Authority.

In addition to the contacts on the front page, the DSAT Safeguarding Lead Advisor is Lara Stead, Devon Education Services. Contact details are held in schools and the DSAT office for staff to access if required.

## Safeguarding Policy

The Diocese of Salisbury Academy Trust and its academies recognise that the welfare of the child is paramount: the needs and wishes of each child will be put first. Throughout this document, 'child' refers to a young person under the age of 18.

We take seriously our duty to safeguard and promote the welfare of the children and young people in our care.

Safeguarding children is everyone's responsibility. 'Working Together to Safeguard Children' 2023, HM Government statutory guidance, defines safeguarding as:

- protecting children from maltreatment;
- preventing impairment of children's health or development;
- ensuring that children grow up in circumstances consistent with the provision of safe and effective care;
- promoting the upbringing of children with their birth parents, or otherwise their family network<sup>4</sup> through a kinship care arrangement, whenever possible and where this is in the best interests of the children; and
- taking action to enable all children to have the best life chances.

The Trust Board recognises its statutory obligations as the Governors of all Academies within the Trust and as such the requirements on it from Working Together to Safeguard Children (2023) and Keeping Children Safe in Education (2025). The Board has in place arrangements that reflect the importance of safeguarding and promoting the welfare of children.

- A clear line of accountability for the commissioning and/or provision of services designed to safeguard and promote the welfare of children.
- A senior board level lead to take leadership responsibility for the organisation's safeguarding arrangements.
- A culture of listening to children and taking account of their wishes and feelings, both in individual decisions and the development of services.
- Arrangements which set out clearly the processes for sharing information, with other professionals and with the Local Authority
- A designated professional lead for safeguarding.
- Safe recruitment practices for individuals whom the organisation will permit to work regularly with children, including policies on when to obtain a criminal record check.
- Appropriate supervision and support for staff, including undertaking regular and frequent safeguarding training.
- Employers are responsible for ensuring that their staff are competent to carry out their responsibilities for safeguarding and promoting the welfare of children and creating an environment where staff feel able to raise concerns and feel supported in their safeguarding role.
- Staff should be given a mandatory induction, which includes familiarisation with child protection responsibilities and procedures to be followed if anyone has any concerns about a child's safety or welfare.
- All professionals should have regular reviews of their own practice to ensure they improve over time.
- Clear policies in line with those from the LA for dealing with allegations against people who work with children.

Therefore, the Trust Board will:

- Appoint a senior member of the Executive staff as the professional lead for Safeguarding, with responsibility to oversee the implementation and management of this policy.
- Appoint a Board Director with the responsibility of overseeing of all safeguarding arrangements in the Trust.
- Review our safeguarding policy on an annual basis with our external provider and receive regular reports from the CEO and Safeguarding Trustee in relation to on-going practice in our schools.
- Task the Professional Lead for Safeguarding to review on a regular basis the requirements of all LAs relevant to our academies and to amend this policy accordingly.
- Ensure the Board all undergo annual training to maintain their understanding and recognition of the importance of safeguarding.
- Co-ordinate through the Professional Lead for Safeguarding, regular meetings for the Designated Safeguarding Leads in each school and opportunities for supervision.

The Trust Board will delegate the following functions to governors in each of its Academies:

- Appoint a member of the local governors to liaise with the Trust designated staff, local authority and/or partner agencies on issues of child protection and in the event of allegations of abuse made against the Headteacher;
- Appointment of a Designated Safeguarding Lead;
- Ensure there is an effective local version of this child protection policy in place together with a staff behaviour policy (code of conduct). Both will be provided to all staff – including temporary staff and volunteers – on induction;
- Receive the annual safeguarding audit from the Designated Safeguarding Leader and/or the nominated local governor;
- Prevent people who pose a risk of harm from working with children by adhering to statutory responsibilities to check staff who work with children, taking proportionate decisions on whether to ask for any checks beyond what is required; and ensuring volunteers are appropriately supervised;
- Review training provision to ensure that appropriate training is in place so that staff are competent to carry out their responsibilities for safeguarding and promoting the welfare of children and creating an environment where staff feel able to raise concerns and feel supported in their safeguarding role.

The school governors shall report to the Professional Lead for Safeguarding, or if necessary the Appointed Trustee immediately following any actions taken under the delegated responsibilities above.

The school governors are accountable for ensuring that the school meets its statutory responsibilities for safeguarding and that all policies and procedures are in place and effective. At all times they will be supported by the Trust Board.

As recommended by the local safeguarding partnerships, school governors will receive an annual report from the Designated Safeguarding Lead and nominated governor in order to help monitor compliance with statutory responsibilities.

Each school is also expected to complete and submit to its Local Authority an annual audit of its safeguarding and child protection arrangements, including an action plan, in line with requests made by the LA.

All children have the right to be safeguarded from harm or exploitation whatever their

- age
- health or disability
- gender or sexual orientation
- race, religion, belief or first language
- political or immigration status

School governors, staff and regular volunteers in this school understand the importance of taking appropriate action and working in partnership with children, their parents/carers and other agencies in order to safeguard children and promote their welfare.

The purpose of this policy is to:

- afford protection for all pupils
- enable staff and volunteers to safeguard and promote the welfare of children
- promote a culture which makes this school a safe place to learn and in which children feel safe

This policy applies to the Headteacher, all staff, including supply and peripatetic staff, regular volunteers (i.e. those who come into school once a week or more or 3 times in a 30 day period), school governors, Trustees or anyone working on behalf of the school.

We will endeavour to safeguard children and young people by:

- Always acting in their best interests;
- Valuing them, listening to and respecting them;
- Involving them in decisions which affect them;
- Never tolerating bullying, homophobic behaviour, racism, sexism or any other forms of discrimination, including through use of technology;
- Ensuring the curriculum affords a range of opportunities to learn about keeping themselves safe, particularly when using technology;
- Exercising our duties under the Counter-Terrorism and Security Act 2015 by ensuring all staff attend 'Prevent' training in respect of radicalisation and extremist behaviour and by assessing the risk of our pupils being drawn into terrorism;
- Supporting attendance and taking action if a child is missing school regularly;
- Appointing a senior member of staff from our leadership team as the Designated Safeguarding Lead and ensuring this person has the time, funding, training, resources and support to perform the role effectively;
- Appointing at least one Deputy Designated Safeguarding Lead to ensure there is always someone available during school hours for staff to discuss any safeguarding concerns;
- Appointing a Designated Teacher to promote the educational achievement of children who are looked after/in care (this is mandatory in our academies) and to work closely with the virtual school head to discuss how pupil premium plus additional funding can support the progress of these children;
- Ensuring that staff working with Looked After Children have information appropriate to their role regarding, for example, the child's care arrangements, legal status and contact with birth parents;
- Making sure all staff and volunteers are aware of and committed to the safeguarding policy and child protection procedures and also understand their individual responsibility to take action;
- Ensuring that all those named above (i.e. DSLs and Deputy DSLs; Designated Teacher; Headteacher, all staff and regular volunteers) have training appropriate to their roles as set out in statutory guidance or recommended by the Local Authority;
- Identifying any concerns early and providing appropriate help to prevent them from escalating, including working with parents / carers and other agencies as appropriate – this may be through support offered by a senior leader or pastoral support workers in our academies;
- Sharing information about child safeguarding concerns with agencies who need to know, and involving children and their parents/carers appropriately;
- Acknowledging and actively promoting that multi-agency working is the best way to promote the welfare of children and protect them from harm;
- Taking the right action, in accordance with Dorset and Wiltshire LA inter-agency safeguarding procedures, if a child discloses or there are indicators of abuse;
- Keeping clear, accurate and contemporaneous safeguarding and child protection records;
- Recruiting staff and volunteers (including host families) safely, ensuring all necessary checks are made in accordance with statutory guidance and legal requirements and also making sure that at least one appointment panel member has undertaken safer recruitment training;

- Providing effective management for the above through induction, support and regular training appropriate to role;
- Adopting a code of conduct for all staff and volunteers which includes acceptable use of technologies, staff / pupil relationships and communications including the use of social media;
- Ensuring our online safety process includes appropriate filters and monitoring systems;
- Ensuring staff and volunteers understand about 'whistle blowing' and how to escalate concerns about pupils or staff if they think the right action has not been taken to safeguard children;
- Promoting a culture in which staff feel able to report to senior leaders what they consider to be unacceptable behaviour or breaches of the Trust Code of Conduct by their colleagues, having faith that they will be listened to and appropriate action taken;
- Dealing appropriately with any allegations/concerns about the behaviour of staff or volunteers in accordance with the process set out in statutory guidance.

This child protection policy forms part of a suite of policies and other documents which relate to the wider safeguarding responsibilities of the Trust. In particular it should be read in conjunction with the:

- Staff behaviour policy (code of conduct) – all staff should be familiar with this document;
- E-safety policies for pupils and staff, which include use of mobile technologies;
- Recruitment, selection and disclosure policy and procedure within the Employment Manual;
- Procedures to handle allegations against members of staff and volunteers, including referring to the Disclosure and Barring Service (when appropriate);
- Whistle blowing policy;
- Procedures to respond appropriately when children are missing education
- Anti-bullying procedures and behaviour policy;
- Keeping Children Safe in Education (2025) – all staff are expected to have read Part One and Annex A

These policies and procedures are stored electronically within the Academy Trust and are available through our website or on request from our offices. Individual academies also hold these documents.

## 1. Safeguarding Statement

As a school we recognise our moral and statutory responsibility to safeguard and promote the welfare of all pupils and expects all staff, governors and volunteers to share this commitment. We recognise that all children, regardless of age, disability, SEND, gender reassignment, race, religion or belief, sex, or sexual orientation have an equal right to protection from all types of harm or abuse. We endeavour to provide a safe and welcoming environment where children are respected and valued. We are alert to the signs of abuse and neglect and follow our procedures to ensure that children receive effective support, protection and justice. We listen to our pupils and take seriously what they tell us, children are aware of the adults they can talk to if they have a concern. When there are concerns for a child's welfare, we may need to share information and work in partnership with other agencies. We will ensure concerns are discussed with parents/carers first unless we have reason to believe that by doing so would be contrary to the child's welfare. This Child Protection and Safeguarding policy underpins and guides our safeguarding procedures and protocols.

## 2. Terminology

Safeguarding and promoting the welfare of children is defined as:

- providing help and support to meet the needs of children as soon as problems emerge.
- protecting children from maltreatment, whether that is within or outside the home, including online.
- preventing impairment of children's mental and physical health or development.
- ensuring that children grow up in circumstances consistent with the provision of safe and effective care.
- promoting the upbringing of children with their birth parents, or otherwise their family network through a kinship care arrangement, whenever possible and where this is in the best interests of the children.
- taking action to enable all children to have the best outcomes in line with the outcomes set out in the Children's Social Care National Framework.

*(Working Together to Safeguard Children)*

Child Protection is a part of safeguarding and promoting welfare. It refers to the activity that is undertaken to protect specific children who are suffering, or are likely to suffer, significant harm. This includes harm that occurs inside or outside the home, including online.

Staff refers to all those working for or on behalf of the school, full or part time, temporary or permanent, in either a paid or voluntary capacity.

Child includes everyone under the age of 18 or 25 if a care leaver.

Parents refers to birth parents and other adults who are in a parenting role, for example step-parents, foster carers, adoptive parents and LA corporate parents.

## 3. Safeguarding Legislation and Guidance

The following safeguarding legislation and guidance has been considered when drafting this policy:

- [Education Act 2002 Section 175 \(maintained schools only\)](#)
- [Education Act 2002 Section 157 \(Independent schools incl Academies and CTC's\)](#)
- [The Education \(Independent School Standards\) \(England\) Regulations 2003](#)
- [The Safeguarding Vulnerable Groups Act 2006](#)
- [Teachers' Standards \(Guidance for school leaders, school staff and governing bodies\)](#)
- [Working Together to Safeguard Children](#)
- [Keeping Children Safe in Education](#)
- [Information Sharing 2018](#)

- [What to do if you're worried a child is being abused](#)
- [Filtering and monitoring standards in schools and colleges \(DfE\)](#)

#### 4. Policy Principles, Aims and Values

##### The welfare of the child is paramount:

- All children regardless of age, disability, gender reassignment, race, religion or belief, sex, sexual orientation or SEND have equal rights to protection, safeguarding and opportunities.
- We recognise that all adults, including temporary staff<sup>1</sup>, volunteers and governors, all have a duty to protect our pupils from harm and have an equal responsibility to act on any suspicion or disclosure that may suggest a child is at risk of harm.
- All staff believe that our school should provide a caring, positive, safe and stimulating environment that promotes the social, physical, mental wellbeing and moral development of the individual child.
- Pupils and staff involved in child protection issues will receive appropriate support and supervision.

##### This policy aims to:

- Raise the awareness of all staff of the need to safeguard children.
- Provide all staff with guidance on the procedures they should adopt in the event that they suspect a child, young person may be experiencing, or be at risk of experiencing, harm. Including (by DSL/DDSL) consideration to the use of appropriate assessments, resources and agency support.
- Provide an environment in which children and young people feel safe, secure, valued and respected, and that they will be listened to should they make a disclosure.
- Raise awareness that abuse can be both Familial and/or Contextual; and abusers can be both adult/s to child/ren or child/ren to child/ren.
- Demonstrate the school's commitment with regard to safeguarding and child protection to pupils, parents and other partners.
- Provide a systematic means of monitoring children known or thought to be at risk of harm.
- To emphasise the need for high levels of communication between staff and the designated safeguarding leads internally and with external agencies and partners, including our contribution to assessments, referrals and support plans.
- To develop and promote effective working relationships with other partnership agencies, particularly Children's Social Care, Police and Health.
- Support children's development in ways that will foster security, confidence, positive attachments, safety and independence.
- Ensure that all staff working within our school who have substantial access to children have been checked as to their suitability, including verification of their identity, qualifications, and a satisfactory DBS check (according to guidance)<sup>2</sup>, and a single central record is kept for audit.
- Provide clarity and expectations on professional behaviours and code of conduct including lone working requirements and contact with children/families outside the school setting, including e-mail.

##### Supporting and Protecting Children:

- We recognise that a child who is abused or witnesses violence may feel helpless and humiliated and could experience barriers to making a disclosure. We understand that the behaviour of a child in these circumstances may range from that which is perceived to be normal to aggressive or withdrawn as well as exhibiting signs of mental health problems. We understand the impact

<sup>1</sup> Wherever the word "staff" is used, it covers ALL staff on site, including ancillary supply and self-employed staff, contractors, volunteers working with children etc. and governors.

<sup>2</sup> DBS Guidance: <https://www.gov.uk/government/collections/dbs-checking-service-guidance--2>

on a child's mental health, behaviour and education from familial and/or contextual abuse. School may not only provide stability in the lives of children who have been abused or who are at risk of harm, but it plays a significant part in the prevention of harm to our children. Building trusting relationships with school staff is critical in this.

**Our school will support all children by:**

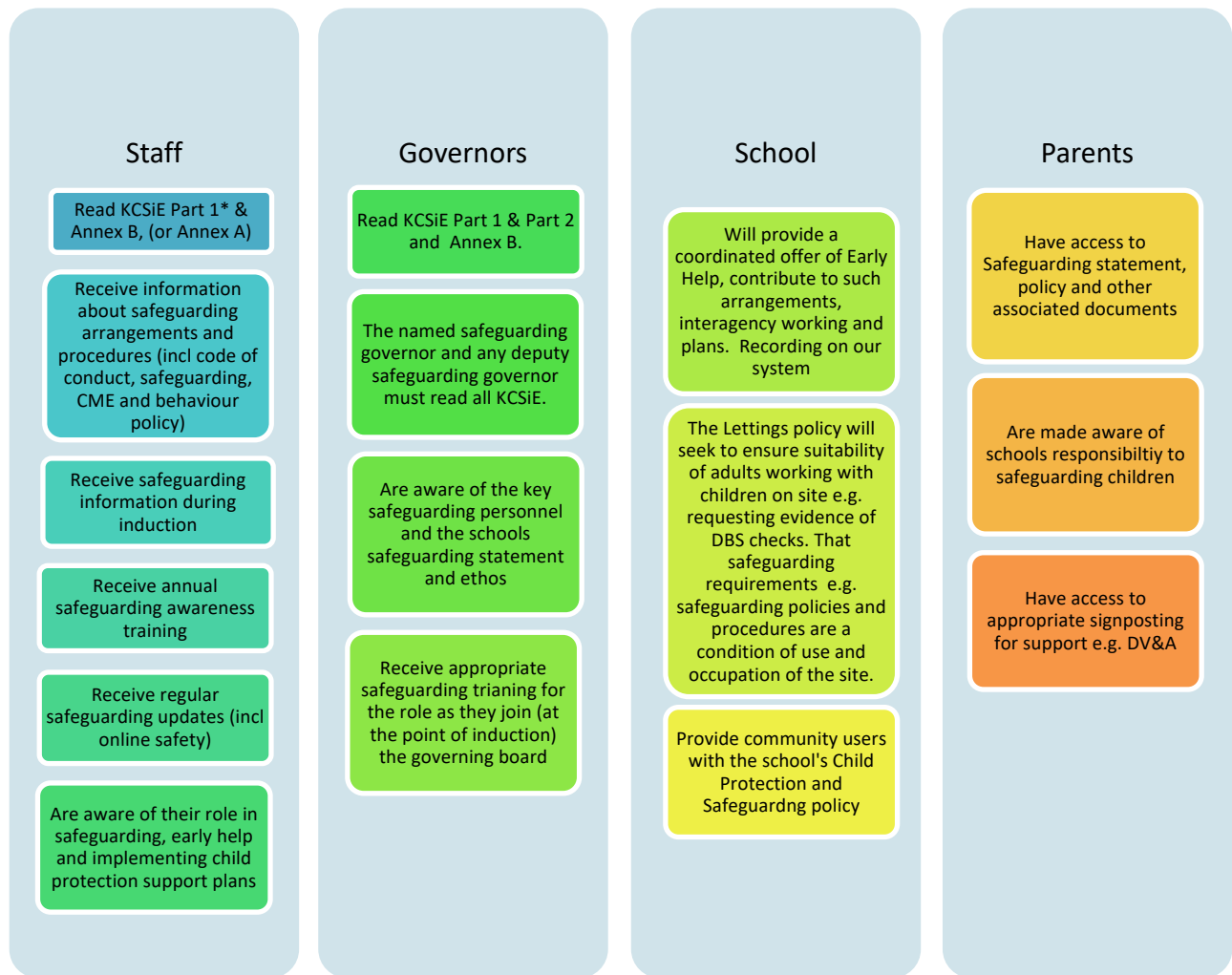
- Encouraging self-esteem and self-assertiveness, through the curriculum as well as our relationships, whilst not condoning aggression or bullying (including cyber bullying).
- Promoting a caring, safe and positive environment within the school and providing children with good lines of communication with trusted adults, supportive friends and an ethos of protection including the availability of anonymous methods for reporting concerns by pupils and systematically gathering pupil voice to evaluate the impact of systems and processes.
- Responding sympathetically to any requests for time out to deal with sensory overwhelm, distress and anxiety.
- Signposting or referring into helplines, counselling or other avenues of external support.
- Liaising and working together with all other settings, support services and those agencies involved in the safeguarding of children.
- Notifying children's social care as soon as there is a significant concern.
- Ensuring appropriate information is shared confidentially at key transition points in a child's journey to ensure continues support (including school medical records).
- Children are taught to understand and manage risk through our Personal, Social, Health and Economic (PSHE) education and Relationship and Sex Education (RSE) and through all aspects of school life. This includes online safety, healthy relationships, consent, equality and diversity, road safety and injury prevention, public transport safety and water safety.
- By accessing and utilising the necessary resources, guidance and toolkits to support the identification of children requiring mental health support, support services and assessments
- Reassuring victims that they are being taken seriously and that they will be supported and kept safe.

**The school community will protect children by:**

- Working to establish and maintain an ethos where children feel secure, are encouraged to talk and are always listened to.
- Ensuring that all children know there are adults in the school whom they can approach if they are worried or in difficulty.
- Including regular consultation with children, parents and staff, gathering their voice.
- Including safeguarding across the curriculum to equip children with the skills they need to stay safe from harm and to know to whom they should turn for help; in particular this will, for example, include anti-bullying work, information about child on child abuse (sexual harassment and sexual violence, consent), online-safety, road safety, pedestrian and cycle training; provide focussed activities to prepare key year groups for transition to new settings and/or key stages e.g. more personal safety/independent travel; and
- Ensuring all staff, pupils and parents are aware of school guidance for their use of mobile technology and the safeguarding issues around the use of mobile technologies, including the use of social media and their associated risks have been shared.

## 5. Safe School, Safe Staff

We will ensure that staff, Governors, school and parents:



## 6. Roles and Responsibilities

We will follow the statutory guidance as set out in the latest Keeping Children Safe in Education (and associated documents and guidance), adhering to the roles, responsibilities and expectations identified for:

- Governing bodies, proprietors and management committees.
- The headteacher
- The designated safeguarding lead
- The deputy designated safeguarding lead/s
- Staff

### [Keeping Children Safe in Education](#)

Governing bodies, proprietors and management committees:

All members of the Academy Standards and Ethos Committee (ASEC – local governors) and Trustees understand and fulfil their responsibilities, namely, to ensure that there is a Child Protection and Safeguarding policy together with a Staff Behaviour policy (Code of Conduct).

The ASEC and Trust Board should ensure that all governors and trustees receive appropriate safeguarding and child protection (including online) training at induction. This training should equip them with the knowledge to provide strategic challenge to test and assure themselves that the

safeguarding policies and procedures in place in schools and colleges are effective and support the delivery of a robust whole school approach to safeguarding. Their training should be updated annually.

Roles and responsibilities will include:

- Child protection, safeguarding, recruitment and managing allegations policies and procedures, including the staff behaviour policy (code of conduct), are consistent with the Local Authority and statutory requirements, are reviewed annually and that the Child Protection and Safeguarding Policy is publicly available on the school website or by other means.
- Ensures that all staff including temporary staff and volunteers are provided with the school's Child Protection and Safeguarding Policy and staff Code of Conduct.
- All staff have read Keeping Children Safe in Education Part 1\* and Annex B and mechanisms are in place to assist staff in understanding and discharging their roles and responsibilities as set out in the guidance. (\* or Annex A if not working directly with children)
- The school operates a safer recruitment procedure that includes online checks for shortlisted candidates, statutory checks on staff (and ongoing post appointment monitoring), disqualification by association regulations and by ensuring that there is at least one person on every recruitment panel who has completed safer recruitment training.
- The school has procedures for dealing with allegations of abuse against staff (including the Headteacher), supply staff, volunteers and against other children and that a referral is made to the DBS if a person in regulated activity has been dismissed or removed due to safeguarding concerns or would have had they not resigned.
- A member of the ASEC/Board, usually the Chair, is nominated to liaise with the Local Authority on Child Protection issues and in the event of an allegation of abuse made against the Headteacher.
- A member of the senior leadership team has been appointed as the Designated Safeguarding Lead (DSL) by the ASEC/Board who will take lead responsibility.
- On appointment, the DSL and deputy(ies) undertake appropriate Level 3 identified training offered by the Local Authority or other provider every two years.
- All other staff have safeguarding training updated as appropriate; but at least annually.
- At least one member of the ASEC has completed safer recruitment training to be refreshed at least every five years.
- Children are taught about safeguarding (including online safety) as part of a broad and balanced curriculum covering relevant issues to meet their needs including children who have recognised vulnerabilities.
- Appropriate safeguarding responses are in place for children who go missing from education.
- Appropriate online filtering and monitoring systems are in place.
- Enhanced DBS checks at the appropriate level are in place for all Governors.
- Any weaknesses in Child Protection are remedied immediately.

The Headteacher:

The Headteacher will support the ASEC, designated safeguarding lead, deputies, staff and volunteers to fulfil their roles and responsibilities

Roles and responsibilities will include:

- Ensuring the Child Protection and Safeguarding policy and procedures are implemented and followed by all staff
- Enabling sufficient time, training, support, resources, including cover arrangements where necessary, is allocated to the DSL and deputy(ies) DSL(s) to carry out their roles effectively,
- Supporting and promoting an open and positive safeguarding culture and ethos in school so that child/ren's wishes and feelings are taken into account when determining what action to take and what services to provide.
- Ensuring systems are in place for children to express their views and give feedback.
- Following the whistleblowing policy and procedures if an allegation is made against a member of staff supply staff or volunteer all staff, including liaising with the Local Authority Designated

Officer (LADO) and referring anyone who has harmed or may pose a risk to a child to the Disclosure and Barring Service.

- That pupils are provided with opportunities throughout the curriculum to learn about safeguarding, including keeping themselves safe online.
- Ensuring that staff are supported and their wellbeing is prioritised and that occupational health services are available and promoted.

#### The Designated Safeguarding Lead (DSL):

The designated safeguarding lead should take lead responsibility for safeguarding and child protection (including online safety). This should be explicit in the role holder's job description.

Roles and responsibilities will include:

- Availability – being available during school hours
- Manage referrals – to e.g. Children's Social Care, Channel programme, Disclosure and Barring service, the Police
- Working with others – e.g. a point of contact with safeguarding partners, a source of support and advice for staff, to promote supportive engagement with parents and/or carers and the SLT/ASEC
- Information sharing and managing the child protection files
- Where the DSL is not the headteacher, liaise with the headteacher to inform them of issues- especially ongoing enquiries under section 47 of the Children Act 1989 and police investigations. This should include being aware of the requirement for children to have an Appropriate Adult. Further information can be found in the Statutory guidance - [PACE Code C 2019](#).
- Raising Safeguarding and Child Protection Awareness
- Updating training, knowledge and skills required to carry out the role of DSL
- Providing support to staff
- Holding and sharing information
- Overseeing and acting upon filtering and monitoring reports and checks to these systems

#### The Deputy Designated Safeguarding Lead/s (DDSL):

Is/ are trained to the same standard as the Designated Safeguarding Lead and, in the absence of the DSL, carries out those functions necessary to ensure the ongoing safety and protection of pupils. In the event of the long-term absence of the DSL the deputy will assume all of the functions above.

Whilst the activities of the designated safeguarding lead can be delegated to appropriately trained deputies, the ultimate lead responsibility for child protection, as set out above, remains with the designated safeguarding lead, this lead responsibility should not be delegated.

#### Staff:

Roles and responsibilities will include:

- Maintaining an attitude of 'it could happen here' where safeguarding is concerned.
- Identifying concerns early, provide help for children, promote children's welfare and prevent concerns from escalating.
- To provide a safe environment in which children can learn.
- Knowing what to do if a child tells them they are being abused, exploited, or neglected.
- Being able to reassure victims that they are being taken seriously and that they will be supported and kept safe.
- Recognising the barriers for children when wanting to make a disclosure (verbal or non-verbal)
- Identifying children who may benefit from early help, (providing support as soon as a problem emerges) and the part they play in these support plans.
- Raising any concerns for a child following the schools safeguarding policies and procedures
- Being aware of local authority referral processes and supporting social workers and other agencies following any referral.
- Adhering to Teachers' Standards - that teachers (which includes headteachers) should safeguard children's wellbeing and maintain public trust in the teaching profession as part of their professional duties.

- Being aware of systems within school which support safeguarding e.g. safeguarding policy, behaviour policy, code of conduct, CME, online filtering, and monitoring
- Attending regular safeguarding and child protection training.
- Recognising that children missing education can act as a vital warning sign to a range of safeguarding issues including neglect, sexual abuse and child sexual and criminal exploitation.

## 7. Confidentiality

- Our school recognises that in order to effectively meet a child's needs, safeguard their welfare and protect them from harm the school must contribute to inter-agency working in line with Working Together to Safeguard Children (2023) and share information between professionals and agencies where there are concerns.
- All staff must be aware that they have a professional responsibility to share information with other agencies in order to safeguard children and that the Data Protection Act 2018<sup>3</sup> is not a barrier to sharing information where the failure to do so would place a child at risk of harm.
- All staff must be aware that they cannot promise a child to keep secrets which might compromise the child's safety or wellbeing.
- However, we also recognise that all matters relating to child protection are personal to children and families. Therefore, in this respect they are confidential and the Headteacher or DSLs will only disclose information about a child to other members of staff on a need-to-know basis.
- We will always undertake to share our intention to refer a child to the Local Authority Safeguarding Hub with their parents /carers unless to do so could put the child at greater risk of harm or impede a criminal investigation. If in doubt, we will contact the Local Authority Safeguarding Hub consultation line.
- In line with KCSiE all children's safeguarding files will be kept confidential and stored securely. Safeguarding files will be kept separate from pupils' schools' files.

## 8. Recognising and Responding to Safeguarding Concerns

### Recognising:

Any child, in any family, in any school, could become a victim of abuse. Staff should always maintain an attitude of **"It could happen here"**. We also recognise that abuse, neglect and safeguarding issues are complex and are rarely standalone events that can be covered by one definition or label. Staff are aware that in most cases multiple issues will overlap one another.

- Abuse, neglect and exploitation are forms of maltreatment of a child. Somebody may abuse or neglect a child by inflicting harm or by failing to act to prevent harm. Children may be abused in the family or in an institutional or community setting by those known to them or, more rarely, by others. Abuse can take place wholly online, or technology may be used to facilitate offline abuse. They may be abused by an adult or adults or by another child or children.
- Abuse, neglect and exploitation may also take place outside of the home, contextual safeguarding, and this may include (but not be limited to), sexual exploitation criminal exploitation, serious youth violence, radicalisation.
- Staff are aware that behaviours linked to drug taking, alcohol abuse, truanting and sexting put children in danger and that safeguarding issues can manifest themselves via child-on-child abuse.

Further information about the four categories of abuse; physical, emotional, sexual and neglect, (familial and contextual) and indicators that a child may be being abused can be found in appendices 1 - 17 and in Keeping Children Safe in Education Part 1/Annex A/Annex B. There are also a number of specific safeguarding concerns that we recognise our pupils may experience.

<sup>3</sup> The Data Protection Act 2018 is the UK's implementation of the General Data Protection Regulation (GDPR).  
[Data Protection in Schools Gov.UK DfE Feb 2023](https://www.gov.uk/government/publications/data-protection-in-schools)

<ul style="list-style-type: none"> <li>• Child missing or absent from education</li> <li>• Child missing from home or care</li> <li>• Child sexual exploitation (CSE), child criminal exploitation (CCE)</li> <li>• Bullying including cyberbullying</li> <li>• Domestic abuse</li> <li>• Drugs</li> <li>• Fabricated or induced illness</li> <li>• Faith abuse</li> <li>• Female genital mutilation (FGM)</li> <li>• Forced marriage</li> <li>• Gangs and youth violence</li> </ul>	<ul style="list-style-type: none"> <li>• Gender-based violence/violence against women and girls (VAWG)</li> <li>• Mental health difficulties</li> <li>• Private fostering</li> <li>• Radicalisation</li> <li>• Youth produced sexual imagery (sexting)</li> <li>• Teenage relationship abuse</li> <li>• Trafficking</li> <li>• Child on child abuse</li> <li>• Upskirting</li> <li>• Serious violence</li> <li>• Sexual harassment</li> </ul>
--	---

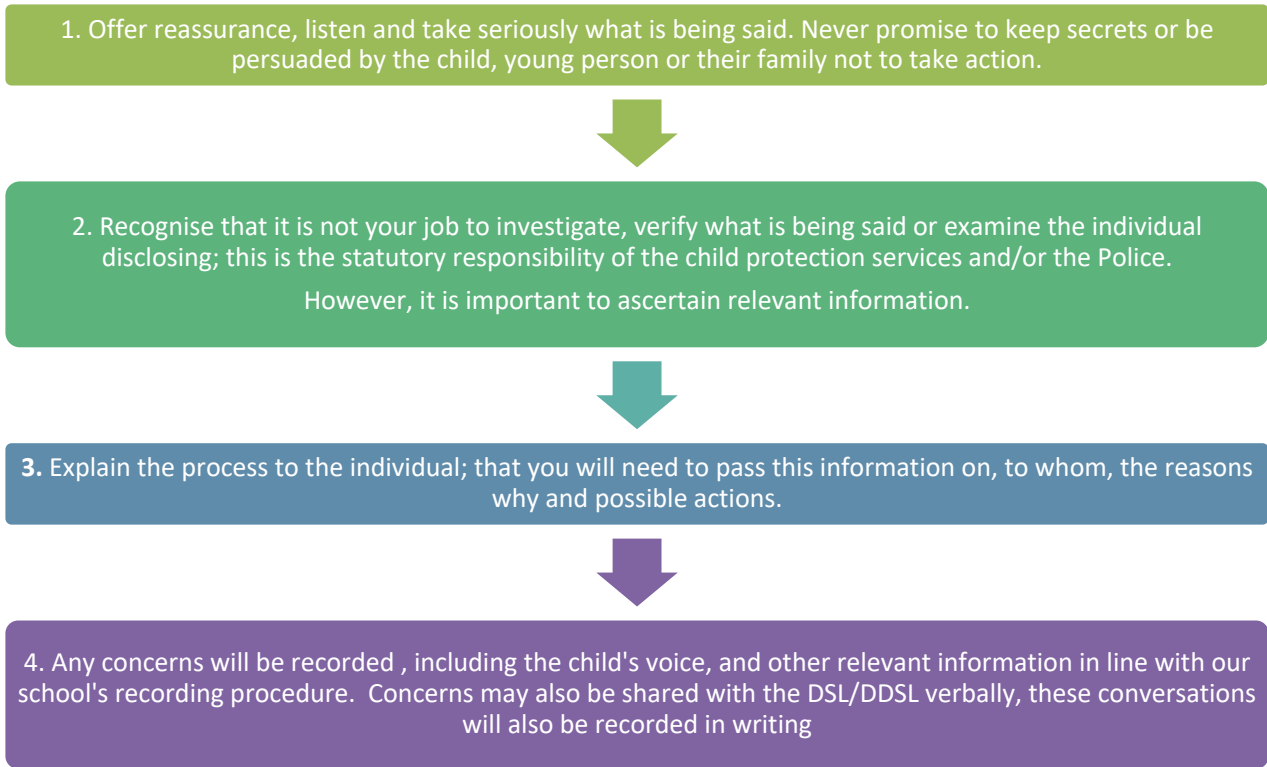
- There will be occasions when staff may suspect that a pupil may be at risk but have no 'real' evidence. The pupil's behaviour may have changed, their artwork could be bizarre, and they may write stories or poetry that reveal confusion or distress, or physical or inconclusive signs may have been noticed.
- We recognise that the signs may be due to a variety of factors, for example, a parent has moved out, a pet has died, a grandparent is very ill, or an accident has occurred. However, they may also indicate a child is being abused or is in need of safeguarding.
- In these circumstances staff will try to give the child the opportunity to talk. It is fine for staff to ask the pupil if they are OK or if they can help in any way.

Further information on the different types of safeguarding concerns and school response can be found in the Appendices.

#### **Responding:**

- Following an initial conversation with the pupil, if the member of staff remains concerned, they should discuss their concerns with the DSL and put them in writing, see FLOW CHART A. Records should include:
  - a clear and comprehensive summary of the concern.
  - details of how the concern was followed up and resolved.
  - a note of any action taken, decisions reached and the outcome.
- If the pupil does begin to reveal that they are being harmed, staff should follow the advice in FLOW CHART A and in the table below 'pupil making a disclosure'.
- All concerns however small must be recorded and shared with the DSL as this information could provide the 'missing' piece of the bigger picture of the lived experience for the child.

**FLOW CHART A**



<p><b>If a pupil discloses to a member of staff</b></p> <ul style="list-style-type: none"> <li>• We recognise that it takes a lot of courage for a child to disclose that they are being abused. They may feel ashamed, guilty or scared, their abuser may have threatened that something will happen if they tell, they may have lost all trust in adults or believe that what has happened is their fault. Sometimes they may not be aware that what is happening is abuse.</li> <li>• A child who makes a disclosure may have to tell their story on a number of subsequent occasions to the police and/or social workers. Therefore, it is vital that their first experience of talking to a trusted adult is a positive one.</li> </ul>
<p><b>During their conversation with the pupil staff will;</b></p> <ul style="list-style-type: none"> <li>• Listen to what the child has to say and allow them to speak freely.</li> <li>• Remain calm and not over-react or act shocked or disgusted – the pupil may stop talking if they feel they are upsetting the listener.</li> <li>• Reassure the child that it is not their fault and that they have done the right thing in telling someone.</li> <li>• Not be afraid of silences – staff must remember how difficult it is for the pupil and allow them time to talk.</li> <li>• Take what the child is disclosing seriously.</li> <li>• Ask open questions and avoid asking leading questions.</li> <li>• Avoid jumping to conclusions, speculation or make accusations.</li> <li>• Not automatically offer any physical touch as comfort. It may be anything but comforting to a child who is being abused.</li> <li>• Avoid admonishing the child for not disclosing sooner. Saying things such as ‘I do wish you had told me about it when it started’ may be the staff member’s way of being supportive but may be interpreted by the child to mean they have done something wrong.</li> <li>• Tell the child what will happen next, that they cannot keep secrets and that information will be shared to ensure the right level of support is given.</li> </ul>

<p><b>Notifying Parents</b></p> <ul style="list-style-type: none"> <li>• The school will normally seek to discuss any concerns about a pupil with their parents. This must be handled sensitively and normally the DSL/DDSL will make contact with the parent in the event of a concern, suspicion or disclosure of abuse of that the child has been harmed in some way.</li> <li>• However, if the school believes that notifying parents could increase the risk to the child or exacerbate the problem, advice will first be sought from children’s Local Authority Safeguarding Hub e.g. familial sexual abuse.</li> </ul>
--

- Where there are concerns about forced marriage or honour-based abuse parents should not be informed a referral is being made as to do so may place the child at a significantly increased risk. In some circumstances it would be appropriate to contact the police.

#### Making a referral

- Concerns about a child or a disclosure should be immediately raised with the DSL who will help decide whether a referral to children's Local Authority Safeguarding Hub/Integrated Front Door, or other support (e.g. Early Help) is appropriate in accordance with the relevant local authority threshold tool.
- If school is uncertain about whether a concern raised should be referred to the Local Authority Safeguarding Hub, a consultation will be sought with the Local Authority to seek further support and guidance.
- If a referral is needed, the DSL should make this rapidly and have the necessary systems in place to enable this to happen. However, anyone can make a referral and if for any reason a staff member thinks a referral is appropriate and one hasn't been made, they can, and should, consider making a referral themselves.
- The child (subject to their age and understanding) and the parents will be told that a referral is being made, unless to do so would increase the risk to the child.
- If after a referral the child's situation does not appear to be improving the designated safeguarding lead (or the person that made the referral) should press for re-consideration to ensure their concerns have been addressed, and most importantly the child's situation improves.
- If a child is in immediate danger or is at risk of harm a referral should be made to children's Local Authority Safeguarding Hub and/or the police immediately. Anybody can make a referral.
- Where referrals are not made by the DSL, the DSL should be informed as soon as possible.

#### Supporting our Staff

- We recognise that staff working in the school who have become involved with a child who has suffered harm or appears to be likely to suffer harm may find the situation stressful and upsetting.
- We will support such staff by providing an opportunity to talk through their anxieties with the DSLs and to seek further support as appropriate.

## 9. Children who are particularly vulnerable

We recognise that some children are more vulnerable to abuse, neglect, exploitation and contextual safeguarding concerns and that additional barriers exist when recognising abuse for some children. We understand that this increase in risk is due more to societal attitudes and assumptions or child protection procedures which fail to acknowledge children's diverse circumstances, rather than the individual child's personality, impairment or circumstances.

In some cases possible indicators of abuse such as a child's mood, behaviour or injury might be assumed to relate to the child's impairment or disability rather than giving a cause for concern. Or a focus may be on the child's disability, special educational needs or situation without consideration of the full picture. In other cases, such as bullying, the child may be disproportionately impacted by the behaviour without outwardly showing any signs that they are experiencing it.

Some children may also find it harder to disclose abuse due to communication barriers, lack of access to a trusted adult or not being aware that what they are experiencing is abuse. Schools should ensure that staff are appropriately aware and trained and that disclosures are handled sensitively. They should seek multi agency support, advice and guidance from specialist organisations as appropriate as well as signposting children to appropriate support services.

Any child may benefit from early help, but all school and college staff should be particularly alert to the potential need for early help for a child who:

- Is disabled and has specific additional needs.
- Has special educational needs (whether or not they have a statutory education, health and care plan).
- Is a young carer.

- Is showing signs of being drawn into anti-social or criminal behaviour, including gang involvement and association with organised crime groups.
- Is frequently missing/goes missing from education, care or from home.
- Is misusing drugs or alcohol themselves.
- Is at risk of modern slavery, trafficking or exploitation.
- Is in a family circumstance presenting challenges for the child, such as substance abuse, adult mental health problems or domestic abuse.
- Has returned home to their family from care.
- Is showing early signs of abuse and/or neglect and/or exploitation.
- Is at risk of being radicalised or exploited.
- Is a privately fostered child.
- Has an imprisoned parent.
- Is experiencing mental health, wellbeing difficulties.
- Is persistently absent from education (including persistently absent for part of the school day).
- Has experienced multiple suspensions, is at risk of being permanently excluded from schools, colleges and in alternative provision or a pupil referral unit.
- Is at risk of 'honour' based abuse such as FGM or forced marriage.
- Gender questioning and gender diverse children.

## 10. Whistleblowing

We recognise that children cannot be expected to raise concerns in an environment where staff fail to do so.

All staff should be aware of their duty to raise concerns, where they exist, about the management of child protection, which may include the attitude or actions of colleagues, poor or unsafe practice and potential failures in the school's safeguarding arrangements. If it becomes necessary to consult outside the school, they should speak in the first instance, to the LADO following the Whistleblowing Policy.

The NSPCC whistleblowing helpline is available for staff who do not feel able to raise concerns regarding child protection failures internally. Staff can call: 0800 028 0285 line is available from 8:00 AM to 8:00 PM, Monday to Friday and email: [help@nspcc.org.uk](mailto:help@nspcc.org.uk)

Whistleblowing regarding the Headteacher should be made to the Chair of the ASEC whose contact details are readily available to staff.

## 11. Allegations against staff

All school staff should take care not to place themselves in a vulnerable position with a child. It is always advisable for interviews or work with individual children or parents/carers to be conducted in view of other adults. Guidance about conduct and safe practice, including safe use of mobile phones by staff and volunteers will be given at induction<sup>4</sup>.

In line with KCSiE part 4 guidelines,

1. All employees and volunteers must record in writing, any concerns they have about the practice or behaviour of a member of staff and share it with the Headteacher (or equivalent senior member of staff).



2. The Headteacher will make an assessment to determine if the matter is a 'low level concern' or an 'allegation' (this means that the concern may meet the harm threshold).



3. The Local Authority Designated Officer (LADO) will be contacted for all 'allegations' and the relevant guidance will be followed. If the Headteacher needs advice or guidance they should contact the LADO. If the allegation is against the Headteacher, the person receiving the allegation will contact the LADO or Chair of Governors directly.



4. Where concerns are considered to be 'low level' by the Headteacher, they should be managed in-line with part 4 of KCSiE and the wider school policies and procedures. The Designated Safeguarding Lead may be involved in this process.



5. If the concern relates to the Headteacher, the person receiving the information will immediately inform the Chair of ASEC/Chair of the Board who will consult the LADO as above, without notifying the Headteacher first.



6. In the event of an allegation against the Headteacher, the decision to suspend will be made by the Chief Executive with advice from the LADO.

Suspension of the member of staff, excluding the Headteacher, against whom an allegation has been made, needs careful consideration, and the Headteacher will seek the advice of the LADO and HR in making this decision.

Staff, parents and governors are reminded that publication of material that may lead to the identification of a teacher who is the subject of an allegation is prohibited by law. Publication includes verbal conversations or writing including content placed on social media sites.

School will ensure that pupils are aware of how they can raise a concern should they be worried about a member of staffs conduct, this may be for example by talking to a trusted adult, using an online 'tell us' button, anonymous reporting slips. (Delete or add systems as appropriate.)

<sup>4</sup> Refer to "Guidance for Safe Working Practice"

## 12. Physical Intervention

We acknowledge that staff must only ever use physical intervention as a last resort, when a child is endangering him/herself or others, and that at all times it must be the minimal force necessary to prevent injury to another person.

Such events should be recorded and signed by a witness.

Staff who are likely to need to use physical intervention will be appropriately trained.

We understand that physical intervention of a nature which causes injury or distress to a child may be considered under child protection or disciplinary procedures.

We recognise that touch is appropriate in the context of working with children, and all staff have been given 'Safe Practice' guidance to ensure they are clear about their professional boundary.

## 13. Confidentiality, Sharing Information and GDPR

All staff will understand that child protection issues warrant a high level of confidentiality, not only out of respect for the pupil and staff involved but also to ensure that information being released into the public domain does not compromise evidence.

Staff should be proactive in sharing as early as possible to help identify, assess and respond to risks or concerns about the safety and welfare of children, whether this is when problems are first emerging, or where a child is already known to Local Authority Children's Social Care.

Staff should only discuss concerns with the DSL, Headteacher or chair of ASEC (depending on who is the subject of the concern). That person will then decide who else needs to have the information and they will disseminate it on a 'need-to-know' basis.

However, following a number of cases where senior leaders in school had failed to act upon concerns raised by staff, Keeping Children Safe in Education emphasises that any member of staff can contact children's social care if they are concerned about a child.

Child protection information will be stored and handled in line with the Data Protection Act 2018<sup>5</sup> the [HM Government Information Sharing and Advice for practitioners providing safeguarding services to children, young people, parents and carers, July 2018](#) and [DfE Data Protection in Schools](#). School will consider where appropriate information sharing prior to the child's formal transfer to their new setting, this could also include key staff from their new setting to be invited to meetings e.g. Child Protection, Core Group or Team Around a Family (with consent of parents and professionals).

At the point a child formally transfers to their new setting, their safeguarding file will be transferred securely in line with GDPR expectations as soon as possible but within 5 working days.

Information sharing is guided by the following principles:

- Necessary and proportionate
- Relevant
- Adequate
- Accurate
- Timely
- Secure

<sup>5</sup> The Data Protection Act 2018 is the UK's implementation of the General Data Protection Regulation (GDPR). [Data Protection in Schools Gov.UK DfE Feb 2023](#)

Fears about sharing information cannot be allowed to stand in the way of the need to promote the welfare and protect the safety of children.

We will ensure that images of children used within publications, publicity and on the website has written parental consent prior to any images being taken and used. This consent will be obtained in line with school's annual data collection process.

#### 14. Policy Links

This policy also links to our policies on (those relating to staff are found in our Employment Manual):

<ul style="list-style-type: none"><li>• Behaviour</li><li>• Staff Behaviour Policy / Code of Conduct</li><li>• Whistleblowing</li><li>• Anti-bullying</li><li>• Health &amp; Safety</li><li>• Allegations against staff</li><li>• Parental concerns</li><li>• Attendance</li><li>• Curriculum</li><li>• PSHE</li><li>• Teaching and Learning</li></ul>	<ul style="list-style-type: none"><li>• Administration of medicines</li><li>• Drug Education</li><li>• Relationships and Sex Education</li><li>• Physical intervention</li><li>• Online Safety, including staff use of mobile phones</li><li>• Risk Assessment</li><li>• Recruitment and Selection</li><li>• Child Sexual Exploitation</li><li>• Intimate Care</li><li>• Radicalisation and Extremism</li><li>• Data Protection/GDPR Guidance</li></ul>
--	---

# Appendices

## 1. Categories of Abuse

### Categories of Abuse:

- Physical Abuse
- Emotional Abuse (including Domestic Abuse)
- Sexual Abuse (including child sexual exploitation)
- Neglect

### Signs of Abuse in Children:

The following non-specific signs may indicate something is wrong:

- Significant change in behaviour
- Extreme anger or sadness
- Aggressive and attention-needing behaviour
- Suspicious bruises with unsatisfactory explanations
- Lack of self-esteem
- Self-injury
- Depression and/or anxiousness
- Age-inappropriate sexual behaviour
- Child Sexual Exploitation
- Criminality
- Substance abuse
- Mental health problems
- Poor attendance
- Unexplainable and/or persistent absences from education

### Risk Indicators

The factors described in this section are frequently found in cases of child abuse. Their presence is not proof that abuse has occurred, but:

- Must be regarded as indicators of the possibility of significant harm
- Justifies the need for careful assessment and discussion with designated / named / lead person, manager, (or in the absence of all those individuals, an experienced colleague)
- May require consultation with and / or referral to Children's Services

The absence of such indicators does not mean that abuse or neglect has not occurred.

In an abusive relationship the child may:

- Appear frightened of the parent(s)/carer(s)
- Act in a way that is inappropriate to her/his age and development (though full account needs to be taken of different patterns of development and specific needs)

The parent or carer may:

- Persistently avoid child health promotion services and treatment of the child's episodic illnesses
- Have unrealistic expectations of the child
- Frequently complain about/to the child and may fail to provide attention or praise (high criticism/low warmth environment)
- Be absent or misusing substances
- Persistently refuse to allow access on home visits
- Be involved in domestic abuse

Staff should be aware of the potential risk to children when individuals, previously known or suspected to have abused children, move into the household.

### **Recognising Physical Abuse**

The following are often regarded as indicators of concern:

- An explanation which is inconsistent with an injury
- Several different explanations provided for an injury
- Unexplained delay in seeking treatment
- The parents/carers are uninterested or undisturbed by an accident or injury
- Parents are absent without good reason when their child is presented for treatment
- Repeated presentation of minor injuries (which may represent a “cry for help” and if ignored could lead to a more serious injury)
- Family use of different doctors and A&E departments
- Reluctance to give information or mention previous injuries

### **Bruising**

Children can have accidental bruising, but the following must be considered as non-accidental unless there is evidence, or an adequate explanation provided:

- Any bruising to a pre-crawling or pre-walking baby
- Bruising in or around the mouth, particularly in small babies which may indicate force feeding
- Two simultaneous bruised eyes, without bruising to the forehead, (rarely accidental, though a single bruised eye can be accidental or abusive)
- Repeated or multiple bruising on the head or on sites unlikely to be injured accidentally
- Variation in colour possibly indicating injuries caused at different times
- The outline of an object used e.g. belt marks, handprints or a hairbrush
- Bruising or tears around, or behind, the earlobe/s indicating injury by pulling or twisting
- Bruising around the face
- Grasp marks on small children
- Bruising on the arms, buttocks and thighs may be an indicator of sexual abuse

Mongolian Blue Spot: Bruising in non-mobile children is rare and may indicate abuse or neglect. Birth marks, especially Mongolian Blue Spots, can mimic bruising. Mongolian Blue Spot can be identified (see below), however if in any doubt as to the cause of the bruise refer to [Southwest Child Protection Procedures \(proceduresonline.com\)](http://proceduresonline.com) local authority guidance and consultation.

- Areas of skin hyperpigmentation – flat, not raised, swollen or inflamed
- Not painful to touch
- Usually present at birth/ develop soon afterwards
- Will not change in shape or colour within a few days
- Normally uniform blue/ grey in colour across the mark
- Common in African, Middle Eastern, Mediterranean and Asian children
- While most occur at the lower back and buttocks, they can appear anywhere (e.g. back of shoulder or limb). Scalp/ face rarely affected
- Can be single/ multiple, vary in size, but mostly few centimetres diameter
- Gradually fade over many year

## **Bite Marks**

Bite marks can leave clear impressions of the teeth. Human bite marks are oval or crescent shaped. Those over 3 cm in diameter are more likely to have been caused by an adult or older child.

A medical opinion should be sought where there is any doubt over the origin of the bite.

## **Burns and Scalds**

It can be difficult to distinguish between accidental and non-accidental burns and scalds and will always require experienced medical opinion. Any burn with a clear outline may be suspicious e.g.:

- Circular burns from cigarettes (but may be friction burns if along the bony protuberance of the spine)
- Linear burns from hot metal rods or electrical fire elements
- Burns of uniform depth over a large area
- Scalds that have a line indicating immersion or poured liquid (a child getting into hot water is his/her own accord will struggle to get out and cause splash marks)
- Old scars indicating previous burns/scalds which did not have appropriate treatment or adequate explanation

Scalds to the buttocks of a small child, particularly in the absence of burns to the feet, are indicative of dipping into a hot liquid or bath.

## **Fractures**

Fractures may cause pain, swelling and discolouration over a bone or joint. Non-mobile children rarely sustain fractures.

There are grounds for concern if:

- The history provided is vague, non-existent or inconsistent with the fracture type
- There are associated old fractures
- Medical attention is sought after a period of delay when the fracture has caused symptoms such as swelling, pain or loss of movement
- There is an unexplained fracture in the first year of life

## **Scars**

A large number of scars or scars of different sizes or ages, or on different parts of the body, may suggest abuse.

## **Recognising Emotional Abuse**

Emotional abuse may be difficult to recognise, as the signs are usually behavioural rather than physical. The manifestations of emotional abuse might also indicate the presence of other kinds of abuse. The indicators of emotional abuse are often also associated with other forms of abuse.

The following may be indicators of emotional abuse:

- Developmental delay
- Abnormal attachment between a child and parent/carer e.g. anxious, indiscriminate or not attachment
- Indiscriminate attachment or failure to attach
- Aggressive behaviour towards others
- Scapegoated within the family
- Frozen watchfulness, particularly in pre-school children
- Low self-esteem and lack of confidence
- Withdrawn or seen as a "loner" – difficulty relating to others

## Recognising Signs of Sexual Abuse

Boys and girls of all ages may be sexually abused and are frequently scared to say anything due to guilt and/or fear. This is particularly difficult for a child to talk about, and full account should be taken of the cultural sensitivities of any individual child/family.

Recognition can be difficult, unless the child discloses and is believed. There may be no physical signs and indications are likely to be emotional/behavioural.

Some behavioural indicators associated with this form of abuse are:

- Inappropriate sexualised conduct
- Sexually explicit behaviour, play or conversation, inappropriate to the child's age
- Continual and inappropriate or excessive masturbation
- Self-harm (including eating disorder), self-mutilation and suicide attempts
- Involvement in prostitution or indiscriminate choice of sexual partners
- An anxious unwillingness to remove clothes e.g. for sports events (but this may be related to cultural norms or physical difficulties)

Some physical indicators associated with this form of abuse are:

- Pain or itching of genital area
- Blood on underclothes
- Pregnancy in a younger girl where the identity of the father is not disclosed
- Physical symptoms such as injuries to the genital or anal area, bruising to buttocks, abdomen and thighs, sexually transmitted disease, presence of semen on vagina, anus, external genitalia or clothing

## Recognising Neglect

Evidence of neglect is built up over a period of time and can cover different aspects of parenting. Indicators include:

- Failure by parents or carers to meet the basic essential needs e.g. adequate food, clothes, warmth, hygiene and medical care
- A child seen to be listless, apathetic and irresponsible with no apparent medical cause
- Failure of child to grow within normal expected pattern, with accompanying weight loss
- Child thrives away from home environment
- Child frequently absent from school
- Child left with adults who are intoxicated or violent
- Child abandoned or left alone for excessive periods

## 2. Anti-Bullying/Cyberbullying

Our school policy on anti-bullying is set out in a separate document and acknowledges that to allow or condone bullying may lead to consideration under child protection procedures. This includes all forms e.g. cyber, racist, homophobic and gender related bullying. We keep a record of known bullying incidents which is shared with and analysed by the ASEC. All staff are aware that children with SEND and / or differences/perceived differences are more susceptible to being bullied / victims of child abuse.

If the bullying is particularly serious, or the anti-bullying procedures are seen to be ineffective, the Headteacher and the DSL will consider implementing child protection procedures.

The subject of bullying is addressed at regular intervals in PHSE education.

### 3. Bullying, Prejudice and Racist Incidents

Our policy on racist incidents is set out separately and acknowledges that repeated racist incidents or a single serious incident may lead to consideration under child protection procedures. We keep a record of bullying, prejudice and racist incidents and report them as required.

### 4. Radicalisation and Extremism

The Prevent Duty for England and Wales (2023)<sup>6</sup> under section 26 of the Counter-Terrorism and Security Act 2015 places a duty on education and other children's services to have due regard to the need to prevent people from being drawn into terrorism.

Extremism is defined as 'vocal or active opposition to fundamental British values, including democracy, the rule of law, individual liberty and mutual respect and tolerance of different faiths and beliefs. We also include in our definition of extremism calls for the death of members of our armed forces, whether in this country or overseas.

Some children are at risk of being radicalised; adopting beliefs and engaging in activities which are harmful, criminal or dangerous.

School is clear that exploitation of vulnerable children and radicalisation should be viewed as a safeguarding concern and follows the Department for Education guidance for schools and childcare providers on preventing children and young people from being drawn into terrorism<sup>7</sup>.

School seeks to protect children and young people against the messages of all violent extremism including, but not restricted to, those linked to Islamist ideology, or to Far Right / Neo Nazi / White Supremacist ideology, Irish Nationalist and Loyalist paramilitary groups, and extremist Animal Rights movements.

School staff receive training to help identify early signs of radicalisation and extremism. Indicators of vulnerability to radicalisation are shown below.

Opportunities are provided in the curriculum to enable pupils to discuss issues of religion, ethnicity and culture and the school follows the DfE advice Promoting Fundamental British Values as part of SMSC (spiritual, moral, social and cultural education) in Schools (2014)<sup>8</sup>.

The school governors, the Headteacher and the Designated Safeguarding Lead (DSL) will assess the level of risk within the school and put actions in place to reduce that risk. Risk assessment may include the use of school premises by external agencies, anti-bullying policy and other issues specific to the school's profile, community and philosophy.

When any member of staff has concerns that a pupil may be at risk of radicalisation or involvement in terrorism, they should speak with the DSL. They should then follow normal safeguarding procedures. If the matter is urgent then the Police must be contacted by dialling 999. In non-urgent cases where police advice is sought then dial 101 or the national police Prevent advice line on 0800 011 3764.

#### Indicators Of Vulnerability to Radicalisation

1. Radicalisation refers to the process by which a person comes to support terrorism and forms of extremism leading to terrorism.
2. Extremism is defined by the Government in the Prevent Strategy as:

*Vocal or active opposition to fundamental British values, including democracy, the rule of law, individual liberty and mutual respect and tolerance of different faiths*

---

<sup>6</sup> [The Prevent duty guidance](#)

<sup>7</sup> [The Prevent duty](#)

<sup>8</sup> [Promoting Fundamental British Values](#)

*and beliefs. We also include in our definition of extremism calls for the death of members of our armed forces, whether in this country or overseas.*

3. Extremism is defined by the Crown Prosecution Service as:  
The demonstration of unacceptable behaviour by using any means or medium to express views which:
- Encourage, justify or glorify terrorist violence in furtherance of particular beliefs.
  - Seek to provoke others to terrorist acts.
  - Encourage other serious criminal activity or seek to provoke others to serious criminal acts; or
  - Foster hatred which might lead to inter-community violence in the UK.

There is no such thing as a “typical extremist”: those who become involved in extremist actions come from a range of backgrounds and experiences, and most individuals, even those who hold radical views, do not become involved in violent extremist activity.

Pupils may become susceptible to radicalisation through a range of social, personal and environmental factors - it is known that violent extremists exploit vulnerabilities in individuals to drive a wedge between them and their families and communities. It is vital that school staff are able to recognise those vulnerabilities.

**Indicators of vulnerability include:**

- Identity Crisis – the student / pupil is distanced from their cultural / religious heritage and experiences discomfort about their place in society.
- Personal Crisis – the student / pupil may be experiencing family tensions; a sense of isolation; and low self-esteem; they may have dissociated from their existing friendship group and become involved with a new and different group of friends; they may be searching for answers to questions about identity, faith and belonging.
- Personal Circumstances – migration; local community tensions; and events affecting the student / pupil’s country or region of origin may contribute to a sense of grievance that is triggered by personal experience of racism or discrimination or aspects of Government policy.
- Unmet Aspirations – the student / pupil may have perceptions of injustice; a feeling of failure; rejection of civic life.
- Experiences of Criminality – which may include involvement with criminal groups, imprisonment, and poor resettlement / reintegration.
- Special Educational Need – students / pupils may experience difficulties with social interaction, empathy with others, understanding the consequences of their actions and awareness of the motivations of others.

However, this list is not exhaustive, nor does it mean that all young people experiencing the above are at risk of radicalisation for the purposes of violent extremism.

More critical risk factors could include:

- Being in contact with extremist recruiters.
- Accessing violent extremist websites, especially those with a social networking element.
- Possessing or accessing violent extremist literature.
- Using extremist narratives and a global ideology to explain personal disadvantage.
- Justifying the use of violence to solve societal issues.
- Joining or seeking to join extremist organisations; and
- Significant changes to appearance and / or behaviour.
- Experiencing a high level of social isolation resulting in issues of identity crisis and / or personal crisis.

The Prevent duty ensures schools and colleges have ‘due regard’ to the need to prevent people from being drawn into terrorism.

Channel is the voluntary, confidential support programme which focuses on providing support at an early stage to individuals that have been identified as being vulnerable to radicalisation. Prevent referrals may be passed to the multi-agency Channel panel to determine whether individuals require support.

[The Prevent Duty can be accessed via this link.](#) (School specific para's 57-76)

[The Prevent duty: safeguarding learners vulnerable to radicalisation.](#)

Guidance on Channel <https://www.gov.uk/government/publications/channel-guidance>

Further information can be obtained from the Home Office website.

## **5. Domestic Abuse (including Operation Encompass)**

Domestic abuse represents one quarter of all violent crime. It is actual or threatened physical, emotional, psychological or sexual abuse. It involves the use of power and control by one person over another. It occurs regardless of race, ethnicity, gender, class, sexuality, age, and religion, mental or physical ability. Domestic abuse can also involve other types of abuse.

We use the term domestic abuse to reflect that a number of abusive and controlling behaviours are involved beyond violence.

How does it affect children?

Domestic abuse can encompass a wide range of behaviours and may be a single incident or a pattern of incidents. That abuse can be, but is not limited to, psychological, physical, sexual, financial or emotional. Children can be victims of domestic abuse. They may see, hear, or experience the effects of abuse at home and/or suffer domestic abuse in their own intimate relationships (teenage relationship abuse). All of which can have a detrimental and long-term impact on their health, well-being, development, and ability to learn. In some cases children may blame themselves for the abuse or may have had to leave the family home as a result. Children who witness domestic abuse are at risk of significant harm.

What are the signs to look out for?

Children affected by domestic abuse reflect their distress in a variety of ways. They may change their usual behaviour and become withdrawn, tired, start to wet the bed and have behavioural difficulties. They may not want to leave their house or may become reluctant to return. Others will excel, using their time in your care as a way to escape from their home life. None of these signs are exclusive to domestic abuse so when you are considering changes in behaviours and concerns about a child, think about whether domestic abuse may be a factor.

What should I do if I suspect a family is affected by domestic abuse?

### **WILTSHIRE RESOURCE HUB**

In these pages you will find a central repository for information relating to policies and guidance, assessment tools and resources.

[Wiltshire Safeguarding Vulnerable People Partnership \(SVPP\) - Policies and guidance \(wiltshiresvpp.org.uk\)](http://wiltshiresvpp.org.uk)

### **DORSET RESOURCE HUB**

In these pages you will find a central repository for information relating to policies and guidance, assessment tools and resources.

[Pan-Dorset Resources - Pan-Dorset Safeguarding Children Partnership \(pdscp.co.uk\)](http://pdscp.co.uk)

## WHERE TO GO FOR FURTHER SUPPORT AND INFORMATION – WILTSHIRE

### Out of Hours

- Wiltshire out of hours helpline: 01225 712880 (5pm - 8am Monday - Friday and 24 hours at the weekend)

### National Domestic Violence Helpline

- Tel: 0808 2000 247 Free and confidential 24hr helpline run by Women's Aid and Refuge. This helpline will take calls from children & young people

### Fear Free

- Tel: 01225 775276 (Monday - Friday, 9am - 5pm)
- Online: <https://www.fearfree.org.uk/refer/wiltshire/>
- <https://www.fearfree.org.uk/contact-us/>

### Women's Aid

- Tel: 0800 1111 24hr freephone (ChildLine)
- Website: <https://www.womensaid.org.uk/>

### Relate Mid Wiltshire

Relate Mid Wiltshire, 2 Prospect Place, Trowbridge. BA14 8QA

- Tel: 0300 003 1781
- Website: [www.relatemidwiltshire.co.uk](http://www.relatemidwiltshire.co.uk)
- Email: [appointments.midwilts@relate.org.uk](mailto:appointments.midwilts@relate.org.uk)

Relate Mid Wiltshire offers a counselling service for young people aged 7-19 years who are experiencing emotional distress including those who have witnessed or experienced domestic abuse. The aim is to improve self-esteem, resilience and their ability to cope.

### How to report an adult at risk

If you have any concerns about a vulnerable person being abused you should contact the [Advice and Contact](#) team at Wiltshire Council or complete a [safeguarding referral form](#) online.

## WHERE TO GO FOR FURTHER SUPPORT AND INFORMATION – DORSET

### HRDA

In Dorset, MARAC (Multi-Agency Risk Assessment Conference) has been replaced with HRDA (High Risk Domestic Abuse meetings). Further details and the referral form can be found [here](#)

Should you have concerns about a child or family you are working with, the Domestic Abuse Toolkit will signpost you appropriately.

TAKEN FROM <https://pdscp.co.uk/wp-content/uploads/2021/07/Domestic-Abuse-Toolkit-Final-July-2021.pdf>

[Domestic Abuse: Specialist Sources of Support \(GOV.UK\)](#) – Nationalist Specialist Support Services contact details

## [Domestic Abuse help for children and young people](#)

[Domestic abuse: how to get help](#) – range of resources including, specialist services, guidance on Domestic Violence Disclosure Scheme and court orders, translated guidance and how to summon help and find a safe space.

[Safe Lives](#) - resources library for professionals working with victims of domestic abuse and their families including MARAC

[Operation Encompass Resources](#) - police and education partnership enabling schools to offer immediate support to children experiencing domestic abuse.

[Controlling or coercive behaviour: statutory guidance framework \(accessible\) - GOV.UK](#)

## [Domestic Abuse Act 2021](#)

**National Domestic Abuse Helpline** Refuge runs the National Domestic Abuse Helpline, available 24hour a day 0808 2000 247 and its website offers guidance and support for potential victims.

Refuge: <https://www.refuge.org.uk/>

### **Operation Encompass**

Operation Encompass helps police and schools work together to provide emotional and practical help for children. Police will inform the 'key adult' within school if they have been called to an incident of domestic abuse, where there are children in the household before registration the next day.

## **6. Exploitation (including Child Sex Exploitation, Child Criminal Exploitation and County Lines)**

Both CSE and CCE are forms of abuse and both occur where an individual or group takes advantage of an imbalance in power to coerce, manipulate or deceive a child into sexual or criminal activity. This power imbalance could be due to age, gender, sexual identity, cognitive ability, physical strength, status, and /or access to economic or other resources. The abuse could be linked to an exchange for something the victim perceives that they need or want and/or will be to the financial benefit or other advantage (such as increase status) of the perpetrator or facilitator.

The abuse can be perpetrated by individuals or groups, males or females, and adults or children (who themselves may be experiencing exploitation). The abuse can be a one-off occurrence or a series of incidents over time and range from opportunistic to complex organised abuse. It may involve force and/or enticement-based methods of compliance and may, or may not, be accompanied by violence or threats of violence.

Victims can be exploited even when the activity appears consensual, and it should be noted exploitation as well as being physical can be facilitated and/or take place online. The experience of girls who are criminally exploited can be very different from boys, the indicators may not be the same and both boys and girls that are being criminally exploited may be at higher risk of sexual exploitation.

Any concerns that a child is being or is at risk of being sexually or criminally exploited should be passed without delay to the DSL. We aware there is a clear link between regular school absence/truanting, CSE and CCE. Staff should consider a child to be at potential CSE/CCE risk in the case of regular school absence/truanting and make reasonable enquiries with the child and parents to assess this risk.

The DSL will use the appropriate Local Authority Assessment tool on all occasions when there is a concern that a child is being or is at risk of being sexually or criminally exploited or where indicators have been observed that are consistent with a child who is being or who is at risk of being sexually or criminally exploited. These assessments will indicate to the DSL whether a referral to the Exploitation Hub/Local Authority Safeguarding Hub is required. If the DSL is in any doubt, they will contact the Safeguarding Hub consultation.

In all cases if the assessment identified any level of concern the DSL should contact their local MACE (Missing and Child Exploitation) and follow published protocols. If a child is in immediate danger the police should be called on 999.

School is aware that often a child is not able to recognise the coercive nature of the abuse and does not see themselves as a victim. As a consequence the child may resent what they perceive as interference by staff. However, staff must act on their concerns as they would for any other type of abuse.

School includes the risks of sexual and criminal exploitation in the PSHE and RSE curriculum. Pupils will be informed of the grooming process and how to protect themselves from people who may potentially be intent on causing harm. They will be supported in terms of recognising and assessing risk in relation to CSE/CCE, including online, and knowing how and where to get help.

The following list of indicators is not exhaustive or definitive, but it does highlight common signs which can assist professionals in identifying children or young people who may be victims of sexual or criminal exploitation.

Signs include:

- Going missing from home or school
- Regular school absence/truancy
- Underage sexual activity
- Inappropriate sexual or sexualised behaviour
- Sexually risky behaviour, 'swapping' sex
- Repeat sexually transmitted infections
- In girls, repeat pregnancy, abortions, miscarriage
- Receiving unexplained gifts or gifts from unknown sources
- Having multiple mobile phones and worrying about losing contact via mobile
- Online safety concerns such as youth produced sexual imagery or being coerced into sharing explicit images.
- Having unaffordable new things (clothes, mobile) or expensive habits (alcohol, drugs)
- Changes in the way they dress
- Going to hotels or other unusual locations to meet friends
- Seen at known places of concern
- Moving around the country, appearing in new towns or cities, not knowing where they are
- Getting in/out of different cars driven by unknown adults
- Having older boyfriends or girlfriends
- Contact with known perpetrators
- Involved in abusive relationships, intimidated and fearful of certain people or situations
- Hanging out with groups of older people, or anti-social groups, or with other vulnerable peers
- Associating with other young people involved in sexual exploitation
- Recruiting other young people to exploitative situations
- Truancy, exclusion, disengagement with school, opting out of education altogether
- Unexplained changes in behaviour or personality (chaotic, aggressive, sexual)
- Mood swings, volatile behaviour, emotional distress
- Self-harming, suicidal thoughts, suicide attempts, overdosing, eating disorders
- Drug or alcohol misuse
- Getting involved in crime
- Police involvement, police records
- Involved in gangs, gang fights, gang membership
- Injuries from physical assault, physical restraint, sexual assault
- Has experienced multiple suspensions, is at risk of being permanently excluded from schools, college and in alternative provision or pupil referral unit.

Child Criminal Exploitation can include children being forced or manipulated into transporting drugs or money through county lines, working in cannabis factories, shoplifting or pickpocketing. They can also be forced or manipulated into committing vehicle crime or threatening/committing serious violence to others

County lines is a term used to describe gangs and organised criminal networks involved in the exporting of illegal drugs (primarily crack cocaine and heroin) into one or more importing areas (within the UK), using dedicated mobile phone lines or other form of 'deal line.'

Exploitation is an integral part of the county lines offending model with children and vulnerable adults being exploited to move (and store) drugs and money. The same grooming models used to coerce, intimidate and abuse individuals for sexual and criminal exploitation are also used for grooming vulnerable individuals for county lines.

CSE is a form of child sexual abuse. CSE can occur over time or be a one-off occurrence. CSE can affect any child, who has been coerced into engaging in sexual activities. This includes 16 and 17-year-olds who can legally consent to have sex.

Sexual abuse may involve physical contact, including assault by penetration (for example, rape or oral sex) or nonpenetrative acts such as masturbation, kissing, rubbing, and touching outside clothing. It may include non-contact activities, such as involving children in the production of sexual images, forcing children to look at sexual images or watch sexual activities, encouraging children to behave in sexually inappropriate ways or grooming a child in preparation for abuse including via the internet.

#### **SUPPORT AVAILABLE - WILTSHIRE**

[Wiltshire Healthy Schools](#) is provided by Wiltshire Council's Children's Services to help schools effectively address the health and wellbeing of children and young people. All schools have an important role to play in addressing CSE through their programmes of PSHE education. Wiltshire schools can use the [Wiltshire Healthy Schools CSE teaching resources](#) to supplement their existing programmes.

[Wiltshire Safeguarding Vulnerable People Partnership](#) offers information about CSE, a [CSE Handbook \(PDF\) \[598KB\] \(opens new window\)](#) for professionals and the [CSE Screening tool \(PDF\) \[133KB\] \(opens new window\)](#)

#### **What should you do if you are concerned about a child?**

- Any practitioner working with a child who they think may be at risk of criminal exploitation should follow their local safeguarding guidance and refer concerns to the Multi-Agency Safeguarding Hub (MASH) [mash@wiltshire.gov.uk](mailto:mash@wiltshire.gov.uk) or 0300456 0108.
- You can also use [Wiltshire Council's Risk Outside the Home form](#).
- If you believe a person is in immediate risk of harm, you should contact the police on 999.
- If there is no immediate risk, you can also share information or concerns by contact the police on 101 if you want.
- Contact your local Police Community Coordinator who deal with local policing responses and they can highlight issues in weekly police tasking meetings
- You can also read [Wiltshire's Children Missing from Home and Care protocol 2022](#), which will help you know what to do if you are concerned about a child who goes missing

#### **SUPPORT AVAILABLE - DORSET**

[BCP and Dorset Safeguarding Partnership Manual](#)

This link provides access to the Dorset and BCP Child Exploitation Screening tool guidance, risk assessment and MACE meeting guidance.

## **CAROLE**

CAROLE stands for *Children At Risk Of or Linked to Exploitation* and the CAROLE model is the way all partners across Dorset areas are working together to improve the effectiveness of our multi-agency response to child exploitation.

[Dorset Child Exploitation Toolkit - BCP Safeguarding Children Partnership and the Dorset Safeguarding Children Partnership](#)

## **BCP Child Exploitation Toolkit**

The Child Exploitation toolkit should be used in **any** instance where you are concerned that a child is being exploited, through sexual or criminal means. The Screening Tool and Risk Assessment helps you to identify and evaluate the cause of your concerns and reflect on whether further safeguarding investigations are needed. The tool should also be used to evidence improvement when you are working with a child and risk is assessed to be reduced. The toolkit is now available to use and replaces all previous CSE Tools.

[BCP Child Exploitation Toolkit - BCP Safeguarding Children Partnership and the Dorset Safeguarding Children Partnership](#)

**For further information on signs of a child's involvement in sexual exploitation:** [Child sexual exploitation: guide for practitioners](#)

**For further information on County Lines:** [Criminal exploitation of children and vulnerable adults: county lines guidance](#)

## **7. Female Genital Mutilation (FGM)**

It is essential that staff are aware of FGM practices and the need to look for signs, symptoms and other indicators of FGM. If a member of staff, in the course of their work, discovers that an act of FGM appears to have been carried out, the member of staff must report this to the Police.

Female Genital Mutilation (FGM) is illegal in England and Wales under the FGM Act 2003 ("the 2003 Act"). It is a form of child abuse and violence against women. FGM comprises all procedures involving partial or total removal of the external female genitalia for non-medical reasons.

Section 5B of the 2003 Act introduces a mandatory reporting duty which requires regulated health and social care professionals and teachers in England and Wales to report 'known' cases of FGM in under 18s which they identify in the course of their professional work to the police. The duty came into force on 31 October 2015.

What is FGM?

It involves procedures that intentionally alter/injure the female genital organs for non-medical reasons.

4 types of procedure:

Type 1 Clitoridectomy – partial/total removal of clitoris

Type 2 Excision – partial/total removal of clitoris and labia minora

Type 3 Infibulation entrance to vagina is narrowed by repositioning the inner/outer labia

Type 4 all other procedures that may include: pricking, piercing, incising, cauterising and scraping the genital area.

Why is it carried out?

Belief that:

- FGM brings status/respect to the girl – social acceptance for marriage
- Preserves a girl's virginity
- Part of being a woman / rite of passage
- Upholds family honour
- Cleanses and purifies the girl
- Gives a sense of belonging to the community
- Fulfils a religious requirement
- Perpetuates a custom/tradition
- Helps girls be clean / hygienic
- Is cosmetically desirable
- Mistakenly believed to make childbirth easier

### **Is FGM legal?**

FGM is internationally recognised as a violation of human rights of girls and women. Female Genital Mutilation (FGM) is illegal in England and Wales under the FGM Act (2003). It is a form of child abuse and violence against women. A mandatory reporting duty requires teachers to report 'known' cases of FGM in under 18s, which are identified in the course of their professional work, to the police<sup>9</sup>.

The duty applies to all persons in our School who are employed or engaged to carry out 'teaching work' in the school, whether or not they have qualified teacher status. The duty applies to the individual who becomes aware of the case to make a report. It should not be transferred to the Designated Safeguarding Lead; however the DSL should be informed.

If a teacher is informed by a girl under 18 that an act of FGM has been carried out on her, or a teacher observes physical signs which appear to show that an act of FGM has been carried out on a girl under 18, and they have no reason to believe the act was necessary for the girl's physical or mental health or for purposes connected with labour or birth, the teacher should personally make a report to the police force in which the girl resides by calling 101. The report should be made by the close of the next working day.

School staff are trained to be aware of risk indicators of FGM identified in this section of the Appendix. Concerns about FGM outside of the mandatory reporting duty should be reported as per our school's child protection procedures. Staff should be particularly alert to suspicions or concerns expressed by female pupils about going on a long holiday during the summer vacation period. There should also be consideration of potential risk to other girls in the family and practicing community.

Where there is a risk to life or likelihood of serious immediate harm the teacher should report the case immediately to the police, including dialling 999 if appropriate.

There are no circumstances in which a teacher or other member of staff should examine a girl.

### **Circumstances and occurrences that may point to FGM happening are:**

- Child talking about getting ready for a special ceremony
- Family taking a long trip abroad
- Child's family being from one of the 'at risk' communities for FGM (Kenya, Somalia, Sudan, Sierra Leon, Egypt, Nigeria, Eritrea as well as non-African communities including Yemeni, Afghani, Kurdistan, Indonesia and Pakistan)
- Knowledge that the child's sibling has undergone FGM
- Child talks about going abroad to be 'cut' or to prepare for marriage

---

<sup>9</sup> [FGM procedural information](#)

## Signs that may indicate a child has undergone FGM:

- Prolonged absence from school and other activities
- Behaviour changes on return from a holiday abroad, such as being withdrawn and appearing subdued
- Bladder or menstrual problems
- Finding it difficult to sit still and looking uncomfortable
- Complaining about pain between the legs
- Mentioning something somebody did to them that they are not allowed to talk about
- Secretive behaviour, including isolating themselves from the group
- Reluctance to take part in physical activity
- Repeated urinary tract infection
- Disclosure

## The 'One Chance' rule

As with Forced Marriage (outlined below) there is the 'One Chance' rule. It is essential that settings /schools/colleges take action **without delay** and make a referral to children's services.

## 8. Forced Marriage

A forced marriage is a marriage in which one or both people do not (or in cases of people with learning disabilities cannot) consent to the marriage but are coerced into it. Coercion may include physical, psychological, financial, sexual and emotional pressure. It may also involve physical or sexual violence and abuse.

Forced marriage is an appalling and indefensible practice and is recognised in the UK as a form of violence against women and men, domestic/child abuse and a serious abuse of human rights. Since June 2014 forcing someone to marry has become a criminal offence in England and Wales under the Anti-Social Behaviour, Crime and Policing Act 2014.

A forced marriage is not the same as an arranged marriage which is common in several cultures. The families of both spouses take a leading role in arranging the marriage but the choice of whether or not to accept the arrangement remains with the prospective spouses.

School staff should never attempt to intervene directly as a school or through a third party. Contact should be made with the Local Authority Safeguarding Hub.

## 9. Honour-based Abuse

Honour based abuse (HBV) can be described as a collection of practices, which are used to control behaviour within families or other social groups to protect perceived cultural and religious beliefs and/or honour. Such abuse can occur when perpetrators perceive that a relative has shamed the family and/or community by breaking their honour code.

Honour based abuse might be committed against people who.

- become involved with a boyfriend or girlfriend from a different culture or religion.
- want to get out of an arranged marriage.
- want to get out of a forced marriage.
- wear clothes or take part in activities that might not be considered traditional within a particular culture.

It is a violation of human rights and may be a form of domestic and/or sexual abuse. There is no, and cannot be, honour or justification for abusing the human rights of others.

## 10. One Chance Rule

All staff are aware of the 'One Chance' Rule' in relation to forced marriage, FGM and HBV. Staff recognise they may only have 'one chance' to speak to a pupil who is a potential victim and have just one chance to save a life.

School is aware that if the victim is not offered support following disclosure that the 'One Chance' opportunity may be lost. Therefore, all staff are aware of their responsibilities and obligations when they become aware of potential forced marriage, FGM and HBV cases.

## 11. Mental Health

Staff will be aware that mental health problems can, in some cases, be an indicator that a child has suffered or is at risk of suffering abuse, neglect or exploitation. Whilst school recognise that only appropriately trained professionals can diagnose mental health problems; staff are able to make day to day observations of children and identify such behaviour that may suggest they are experiencing a mental health problem or be at risk of developing one.

How traumatic Adverse Childhood Experiences and experiences of abuse, neglect and exploitation can impact on a child's mental health, behaviour and education through to adolescence and adulthood will be covered in safeguarding awareness training and updates. If staff have a concern about a child's mental health that is also a safeguarding concern, they will share this with the DSL or deputy. School will also refer to the mental health and behaviour in schools' guidance<sup>10</sup>.

When supporting children experiencing mental health difficulties school will explore resources such as

[Promoting children and young people's mental health and wellbeing](#)

[Every Interaction Matters Webinar](#)

[Wellbeing for Education Recovery](#)

[Preventing and Tackling Bullying](#)

[Promoting and supporting mental health and wellbeing in schools and colleges](#)

## 12. Private Fostering Arrangements

A private fostering arrangement occurs when someone other than a parent or close relative cares for a child for a period of 28 days or more, with the agreement of the child's parents. It applies to children under the age of 16 or 18 if the child is disabled. Children looked after by the local authority or who are placed in residential schools, children's homes or hospitals are not considered to be privately fostered.

Private fostering occurs in all cultures, including British culture and children may be privately fostered at any age.

School recognises that most privately fostered children remain safe and well but are aware that safeguarding concerns have been raised in some cases. Therefore, all staff are alert to possible safeguarding issues, including the possibility that the child has been trafficked into the country.

---

<sup>10</sup> [Mental health and behaviour in schools: guidance](#)

By law, a parent, private foster carer or other persons involved in making a private fostering arrangement must notify children's services as soon as possible. However, where a member of staff becomes aware that a pupil may be in a private fostering arrangement, they will raise this with the DSL and the DSL will notify MASH of the circumstances.

### **13. Looked after children and previously looked after children**

The most common reason for children becoming looked after is as a result of abuse and neglect. Our school will ensure that staff have the necessary skills and understanding to keep looked after/previously looked after children safe. Appropriate staff have information about a child's looked after legal status and care arrangements, including the level of authority delegated to the carer by the authority looking after the child and contact arrangements with birth parents or those with parental responsibility.

The designated teacher for looked after children and the DSL have details of the child's social worker and the name and contact details of the Local Authority's virtual school head for children in care.

The designated teacher for looked after children works with the virtual school head to discuss how Pupil Premium Plus funding can be best used to support the progress of looked after children in the school and meet the needs in the child's personal education plan. The designated teacher will follow the statutory guidance 'Promoting the education of Looked After Children'.

### **14. Children Missing Education**

Attendance, absence and exclusions are closely monitored. The school will hold more than one emergency contact number for pupils and students where reasonably possible. A child going missing or who has unexplainable and/or persistent absences from education is a potential indicator of abuse neglect and exploitation, including sexual abuse and sexual exploitation.

The DSL will monitor unauthorised absences and take appropriate action including notifying the local authority particularly where children go missing on repeat occasions and/or are missing for periods during the school day in conjunction with 'Children Missing Education: Statutory Guidance for Local Authorities'<sup>11</sup>. Staff must be alert to signs of children at risk of travelling to conflict zones, female genital mutilation and forced marriage.

### **15. Child on Child Abuse (including Sexual Violence, Sexual Harassment and HSB)**

The DSL, ASEC and Head Teacher and Trust Board will take due regard to Part 5, KCSiE

In most instances, the conduct of pupils towards each other will be covered by our behaviour policy. However, some allegations may be of such a serious nature that they may raise safeguarding concerns. School recognises that children are capable of abusing their peers. It will not be passed off as 'banter' or 'part of growing up'. The forms of child-on-child abuse are outlined below.

- Domestic abuse – an incident or pattern of actual or threatened acts of physical, sexual, financial and/or emotional abuse, perpetrated by an adolescent against a current or former dating partner regardless of gender or sexuality.
- Bullying (including cyberbullying, prejudice-based and discriminatory bullying).
- Child sexual exploitation – children under the age of 18 may be sexually abused in the context of exploitative relationships, contexts and situations by peers who are also under 18.
- Harmful sexual behaviour – children and young people presenting with sexual behaviours that are outside of developmentally 'normative' parameters and harmful to themselves and others

---

<sup>11</sup> [CME Statutory Guidance for Local Authorities](#)

- Upskirting – which typically involves taking a picture under a person’s clothing without them knowing, with the intention of viewing their genitals or buttocks to obtain sexual gratification, or cause the victim humiliation, distress or alarm.
- Serious youth violence<sup>12</sup> – any offence of most serious violence or weapon enabled crime, where the victim is aged 0-19 i.e. murder, manslaughter, rape, wounding with intent and causing grievous bodily harm. ‘Youth violence’ is defined in the same way, but also includes assault with injury offences. All staff will receive training so that they are aware of indicators which may signal that children are at risk from or involved with serious violence and crime.
- Initiation/hazing type violence and rituals (this could include activities involving harassment, abuse or humiliation used as a way of initiating a person into a group and may also include an online element); and
- Consensual and non-consensual sharing of nudes and semi-nude images and or videos (also known as sexting or youth produced sexual imagery).

The term child-on-child abuse can refer to all of these definitions and a child may experience one or multiple facets of abuse at any one time. Therefore, our response will cut across these definitions and capture the complex web of their experiences.

There are also different gender issues that can be prevalent when dealing with child-on-child abuse (i.e. girls being sexually touched/assaulted, or boys being subjected to initiation/hazing type violence).

School aims to reduce the likelihood of child-on-child abuse through:

- The established ethos of respect, friendship, courtesy and kindness.
- High expectations of behaviour.
- Clear consequences for unacceptable behaviour.
- Providing a developmentally appropriate PSHE curriculum which develops pupils’ understanding of healthy relationships, acceptable behaviour, consent and keeping themselves safe.
- Systems for any pupil to raise concerns with staff, knowing that they will be listened to, valued and believed.
- Robust risk assessments and providing targeted work for pupils identified as being a potential risk to other pupils and those identified as being at risk.

Research indicates that young people rarely disclose child-on-child abuse and that if they do, it is likely to be to their friends. Therefore, School will also educate pupils in how to support their friends if they are concerned about them, that they should talk to a trusted adult in the school and what services they can contact for further advice.

Any concerns, disclosures or allegations of child-on-child abuse in any form should be referred to the DSL using the school’s child protection procedures as set out in this policy. Where a concern regarding child-on-child abuse has been disclosed to the DSL(s), advice and guidance will be sought from the Local Authority Safeguarding Hub and where it is clear a crime has been committed or there is a risk of crime being committed the Police will be contacted.

Working with external agencies the school will respond to the unacceptable behaviour. If a pupil’s behaviour negatively impacts on the safety and welfare of other pupils, then safeguards will be put in place to promote the well-being of the pupils affected and the victim and perpetrator will be provided with support.

### **Sexual Harassment, Sexual Violence and Harmful Sexual Behaviour**

The boundary between what is abusive and what is part of normal childhood or youthful experimentation can be blurred. The determination of whether behaviour is developmental, inappropriate or abusive will hinge around the related concepts of true consent, power imbalance and exploitation. Children’s sexual behaviour exists on a wide continuum, ranging from normal and developmentally expected to inappropriate, problematic, abusive and violent. Problematic, abusive and violent sexual behaviour is developmentally

<sup>12</sup> [Preventing youth violence and gang involvement](#)

inappropriate and may cause developmental damage. This may include children and young people who exhibit a range of sexually problematic behaviour such as indecent exposure, obscene telephone calls, fetishism, bestiality and sexual abuse against adults, peers or children. Staff should be vigilant to:

- Bullying (including cyberbullying)
- Physical abuse such as hitting, kicking, shaking, biting, hair pulling, or otherwise causing physical harm
- Sexual violence and sexual harassment
- Sexting (also known as youth produced sexual imagery)
- Initiation/hazing type violence and rituals
- Upskirting

### **Developmental Sexual Activity**

Encompasses those actions that are to be expected from children and young people as they move from infancy through to an adult understanding of their physical, emotional and behavioural relationships with each other. Such sexual activity is essentially information gathering and experience testing. It is characterised by mutuality and of the seeking of consent.

### **Inappropriate Sexual Behaviour**

Can be inappropriate socially, inappropriate to development, or both. In considering whether behaviour fits into this category, it is important to consider what negative effects it has on any of the parties involved and what concerns it raises about a child or young person. It should be recognised that some actions may be motivated by information seeking, but still cause significant upset, confusion, worry, physical damage, etc. It may also be that the behaviour is “acting out” which may derive from other sexual situations to which the child or young person has been exposed. If an act appears to have been inappropriate, there may still be a need for some form of behaviour management or intervention. For some children, educative inputs may be enough to address the behaviour.

Abusive sexual activity included any behaviour involving coercion, threats, aggression together with secrecy, or where one participant relies on an unequal power base. In order to more fully determine the nature of the incident the following factors should be given consideration. The presence of exploitation in terms of:

**Equality** – consider differentials of physical, cognitive and emotional development, power and control and authority, passive and assertive tendencies

**Consent** – agreement including all the following:

- Understanding that is proposed based on age, maturity, development level, functioning and experience
- Knowledge of society’s standards for what is being proposed
- Awareness of potential consequences and alternatives
- Assumption that agreements or disagreements will be respected equally
- Voluntary decision
- Mental competence

**Coercion** – the young perpetrator who abuses may use techniques like bribing, manipulation and emotional threats of secondary gains and losses that is loss of love, friendship, etc. Some may use physical force, brutality or the threat of these regardless of victim resistance.

In evaluating sexual behaviour of children and young people, the above information should be used only as a guide. Further information and advice is available in the Wiltshire guidance available at [South West Child Protection Procedures](#).

## 16. Online Safety

Our pupils increasingly use electronic equipment on a daily basis to access the internet and share content and images via social media sites such as Facebook, Twitter, Instagram, Snapchat and ooVoo.

Unfortunately, some adults and other children use these technologies to harm children. The harm might range from sending hurtful or abusive texts or emails, to grooming and enticing children to engage in sexual behaviour such as webcam photography or face-to-face meetings. Pupils may also be distressed or harmed by accessing inappropriate material such as pornographic websites or those which promote extremist behaviour, criminal activity, suicide or eating disorders.

School has an online safety policy which explains how we try to keep pupils safe in school and how we respond to online safety incidents (see flowchart below).

School will also provide advice to parents when pupils are being asked to learn online at home and consider how best to safeguard both pupils and staff.

Pupils are taught about online safety throughout the curriculum and all staff receive online safety training which is regularly updated including an understanding of the expectations, applicable roles and responsibilities in relation to filtering and monitoring.

### AI and technology

#### 1. Legal and Ethical Responsibilities

Schools must ensure that AI and technology use complies with existing safeguarding frameworks, including:

- Keeping Children Safe in Education (KCSIE) statutory guidance 1
- UK GDPR and Data Protection Act 2018
- Children's Online Privacy Protection and age-appropriate design codes

#### 2. AI Use by Teachers

Teachers are permitted to use AI for tasks like lesson planning, marking, and admin in line with the Trust AI policy. However, they must verify AI-generated content and ensure it is appropriate and accurate.

Final responsibility for safeguarding and educational content lies with the teacher and school leadership.

#### 3. AI Use by Pupils

Schools can decide whether pupils may use AI tools, but must enforce age restrictions (many AI tools are 18+) and

- Ensure close supervision
- Use tools with built-in safety and filtering features

#### 4. Data Security and Privacy

Schools must manage data security risks associated with AI and cloud-based tools.

The National Cyber Security Centre (NCSC) provides guidance on:

- Cloud security
- Cyber defence
- Device safeguarding (filtering and monitoring)

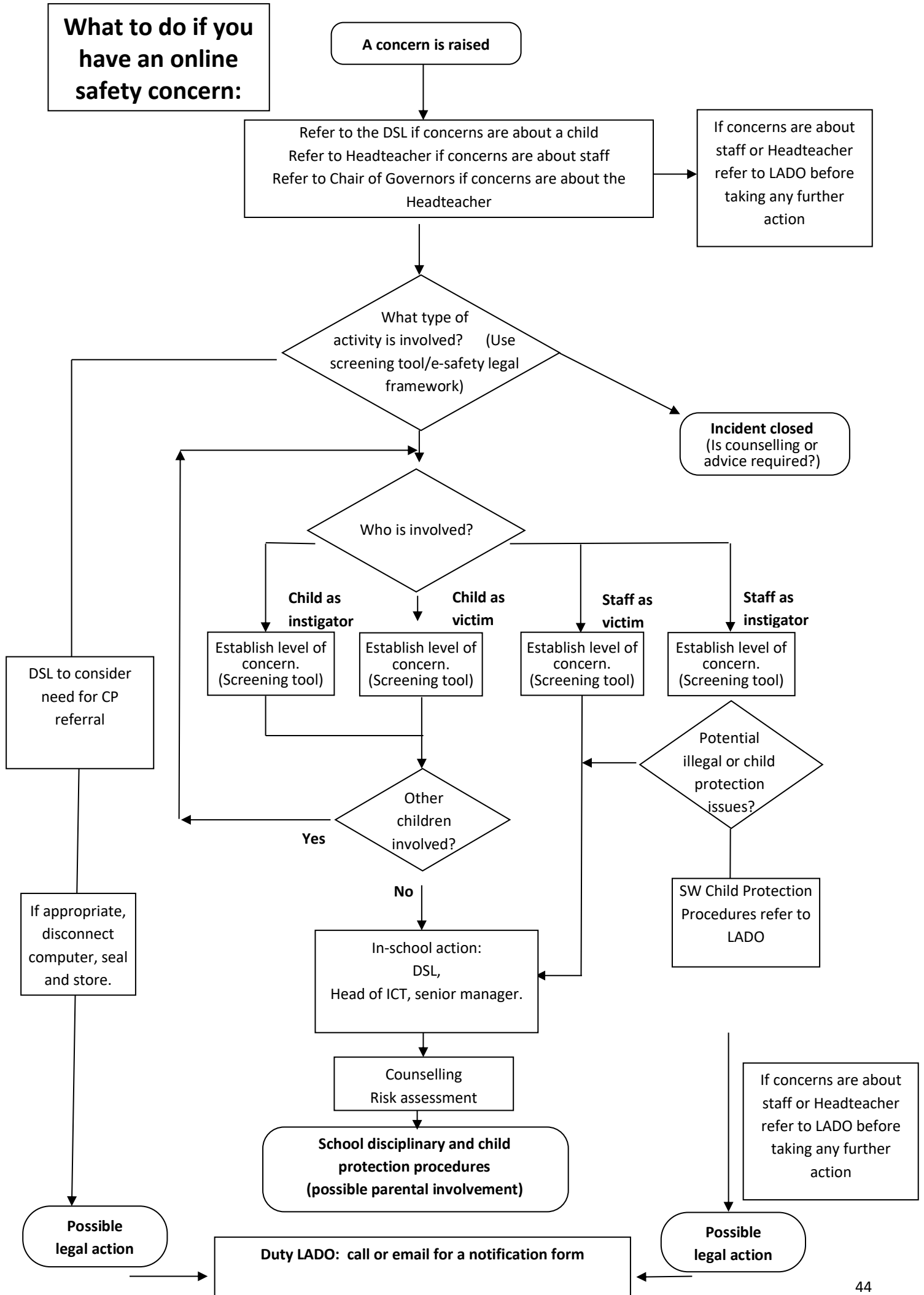
<https://www.ncsc.gov.uk/>

## **5. Policy and Oversight**

While there is no single formal AI framework yet, the Department for Education (DfE) encourages schools to:

- Use AI ethically and cautiously
- Align AI use with existing safeguarding and data protection policies 3
- Develop internal policies for AI use, including acceptable use agreements and staff training

**What to do if you have an online safety concern:**



## 17. Youth produced sexual imagery (sexting)

The practice of children sharing images and videos via text message, email, social media or mobile messaging apps has become commonplace. However, this online technology has also given children the opportunity to produce and distribute sexual imagery in the form of photos and videos. Such imagery involving anyone under the age of 18 is illegal.

Youth produced sexual imagery refers to both images and videos where.

- A person under the age of 18 creates and shares sexual imagery of themselves with a peer under the age of 18.
- A person under the age of 18 shares sexual imagery created by another person under the age of 18 with a peer under the age of 18 or an adult.
- A person under the age of 18 is in possession of sexual imagery created by another person under the age of 18.

All incidents of this nature should be treated as a safeguarding concern and in line with the UKCIS guidance 'Sexting in schools and colleges: responding to incidents and safeguarding young people'<sup>13</sup>, and 'Sharing nudes and semi-nudes: how to respond to an incident.'<sup>14</sup>

Cases where sexual imagery of people under 18 has been shared by adults and where sexual imagery of a person of any age has been shared by an adult to a child is child sexual abuse and should be responded to accordingly.

If a member of staff becomes aware of an incident involving youth produced sexual imagery, they should follow the child protection procedures and refer to the DSL as soon as possible. The member of staff should confiscate the device involved and set it to flight mode or, if this is not possible, turn it off. Staff should not view, copy or print the youth produced sexual imagery.

The DSL should hold an initial review meeting with appropriate school staff and subsequent interviews with the children involved (if appropriate). Parents should be informed at an early stage and involved in the process unless there is reason to believe that involving parents would put the child at risk of harm. At any point in the process if there is concern a young person has been harmed or is at risk of harm a referral should be made to the Local Authority Safeguarding Hub and/or the Police as appropriate.

Immediate referral at the initial review stage should be made to the Local Authority Safeguarding Hub/Police if.

- The incident involves an adult.
- There is good reason to believe that a young person has been coerced, blackmailed or groomed or if there are concerns about their capacity to consent (for example, owing to special education needs).
- What you know about the imagery suggests the content depicts sexual acts which are unusual for the child's development stage or are violent.
- The imagery involves sexual acts.
- The imagery involves anyone aged 12 or under.
- There is reason to believe a child is at immediate risk of harm owing to the sharing of the imagery, for example the child is presenting as suicidal or self-harming.

If none of the above apply then the DSL will use their professional judgement to assess the risk to pupils involved and may decide, with input from the Headteacher, to respond to the incident without escalation to the Local Authority Safeguarding Hub or the police. Such decisions will be recorded.

In applying judgement the DSL will consider if.

- There is a significant age difference between the sender/receiver.

---

<sup>13</sup> [Sexting in schools and colleges](#)

<sup>14</sup> [Sharing nudes and semi-nudes: how to respond to an incident \(UCKIS\)](#)

- There is any coercion or encouragement beyond the sender/receiver.
- The imagery was shared and received with the knowledge of the child in the imagery.
- The child is more vulnerable than usual i.e. at risk.
- There is a significant impact on the children involved.
- The image is of a severe or extreme nature.
- The child involved understands consent.
- The situation is isolated or if the image been more widely distributed.
- There other circumstances relating to either the sender or recipient that may add cause for concern i.e. difficult home circumstances.
- The children have been involved in incidents relating to youth produced imagery before.

If any of these circumstances are present the situation will be escalated according to our child protection procedures, including reporting to the police or the Local Authority Safeguarding Hub. Otherwise, the situation will be managed within the school.

The DSL will record all incidents of youth produced sexual imagery, including both the actions taken, actions not taken, reasons for doing so and the resolution in line with safeguarding recording procedure.

## **18. Arrangements for safeguarding children on trips and visits and clubs run by external providers**

- Where staff are not supervising children from their own setting they must follow this policy.
- Where staff are supervising children from their own settings but at off- site locations, this policy and specified school specific local policies apply.
- Visitors working on school sites with children are expected to abide by this policy.
- Where locations for off- site activities/events have their own risk assessments for children and visitors, these should be adopted and adhered to.
- Where locations for off- site activities/events have no risk assessments for children and visitors in place the home/organising school must prepare risk assessments in accordance with school specific policy.
- No trips or visits must take place under any circumstances without relevant requirements being adhered to most specifically in relation to the “Evolve” trips and visits requirements.
- A child educated off site on dual roll arrangements will be safeguarded by the DSL/safeguarding leads at the alternative provision venue and the policies of these providers will apply. However, the child remains the substantive responsibility of their original school who must assure themselves and ensure that the setting is fit for purpose. Annual quality assurance of offsite/dual roll/alternative provision is the responsibility of the DSL at the original (substantive or referring) school . Regular contact must be made with the alternative provider and the DSL of the home school who should communicate and update each other regularly. (KCSiE)
- Third party organisations using or hiring Trust premises for their own activities and/or events must provide their own safeguarding policies to Headteachers of those venues that are being used. Providers must meet the expectations of the guidance and leasing agreements must reflect this expectation;

<https://www.gov.uk/government/publications/keeping-children-safe-in-out-of-school-settings-code-of-practice>

- Where allegations are received relating to an incident that happened when an individual or organisation was using their premises for the purposes of running activities for children, the school should follow its own safeguarding policy and procedures, including informing the LADO. This responsibility falls on the school and not the out of school setting. ( KCSiE)

## 19. Additional Resources

Further advice on child protection is available from:

NSPCC: <http://www.nspcc.org.uk/>

Childline: <http://www.childline.org.uk/pages/home.aspx>

Anti-Bullying Alliance: <http://anti-bullyingalliance.org.uk/>

Childnet International –making the internet a great and safe place for children. Includes resources for professionals and parents <http://www.childnet.com/>

Thinkuknow (includes resources for professionals and parents) <https://www.thinkuknow.co.uk/>

Safer Internet Centre <http://www.saferinternet.org.uk/>

Provision for transgender pupils: [Guidance for maintained schools and academies in England on provision for transgender pupils November 2022](#)

Knife Crime <https://www.college.police.uk/guidance/knife-crime-evidence-briefing/understanding-causes-knife-crime>

# Children's Advice and Duty Service



**If you're a professional and have concerns about a child, call us and talk to one of our consultant social workers. We will:**

- talk through your concerns
- discuss what action is needed
- help make sure the child receives the right support, at the right time

**You won't be asked to fill out a referral form. We will talk through your worries and agree with you the best way to meet the needs of the child and support their family.**



**Call our dedicated line for professionals:**

**01305 228558**

If you are concerned about a child's welfare or worried they are being abused, you can make a referral to Children's Social Care in Dorset by contacting:

<b>Bournemouth, Christchurch &amp; Poole – Children's First Response Hub:</b>	<b><u>01202 123334</u></b> <a href="mailto:childrensfirstresponse@bcpcouncil.gov.uk">childrensfirstresponse@bcpcouncil.gov.uk</a>
<b>Dorset - Children's Advice and Duty Service (ChAD) Professionals Number:</b>  This is a professionals-only number to discuss your concerns, you will no longer complete a referral form.	<b><u>01305 228558</u></b>
<b>Dorset Families and Members of the Public:</b>	<b><u>01202 228866</u></b>

**In an emergency or out of hours contact:**

<b>Bournemouth, Christchurch &amp; Poole Out of Hours Service:</b>	<b><u>01202 738256</u></b> <a href="mailto:childrensOOHS@bcpcouncil.gov.uk">childrensOOHS@bcpcouncil.gov.uk</a>
<b>Dorset Out of Hours Service:</b>	<b><u>01305 228558</u></b>
<b>Police Non-Emergency:</b>	<b>101</b>
<b>Police Emergency:</b>	<b>999</b>

# What to do if you are worried a child is being abused, neglected or exploited

For staff, volunteers and visitors in all agencies and settings



Be alert to signs of abuse and question unusual behaviour  
**If you have concerns about a child's welfare:**

**Where a child also discloses abuse or neglect:**

- Listen; take their allegation seriously; reassure that you will take action to keep them safe
- Inform them what you are going to do next
- Do not promise confidentiality
- Do not question further or approach/inform the alleged abuser

**Report concerns to the Designated/Named Safeguarding Lead or their deputy:**  
 NAME.....  
**The Designated/Named Safeguarding Lead will:**

- consider further actions required, including consultation with the Integrated Front Door (IFD) (number below)
- record in writing the discussions, decisions and reasons for decisions, in line with statutory guidance)
- Feedback to the individual raising the concern

**In exceptional circumstances or in the absence of a Safeguarding Lead you may contact IFD directly.**

**If a referral is not required:**  
 The Designated Safeguarding Lead will oversee relevant action, eg pastoral support, and/or early help assessment and monitor locally.

If concerns continue

**The Designated/Named Safeguarding Lead (or staff) will contact IFD to make a referral.**

**Additional/unmet needs** – the Designated Safeguarding Lead will consult with relevant agencies and undertake an Early Support Assessment (ESA) and Team around the Child meetings.

- **Integrated Front Door (IFD): 0300 456 0108**
- **Out of Hours Emergency Duty Service: 0300 456 0100** (5pm to midnight Mondays-Thursdays; 4pm to midnight Fridays; 9am to midnight weekends and bank holidays)
- If the child is in **immediate risk**, dial **999** and ask for police assistance

**IFD will:**

1. Acknowledge receipt of referral
2. Decide on next course of action (within 1 working day) for children at potential risk of harm/high needs (amber) or at high risk of harm (red)
3. Provide feedback decision to referrer.

This flowchart is intended for use as a brief guide. Refer to the Wiltshire SVPP 'Multi-Agency Threshold guidance' and the DfE Guidance 'What to do if you are worried a child is being abused' for more information, definitions and possible indicators of abuse.

SVPP website: [www.wiltshiresvpp.org.uk](http://www.wiltshiresvpp.org.uk)

Reviewed: September 2024

## Summary of changes since September 2024

<i>Much of the policy content has remained the same as previous year 2024</i>	
<i>A number of links to online documents have been updated/removed/added to reflect availability</i>	
Title page	Updated to reflect new academic year and KCSiE 2025 references.
Contents page	Addition of a new appendix 18 and re-numbering thereafter. All page numbers reviewed and amended as appropriate.
Page11	Addition of requirement for schools to have anonymous reporting mechanisms for pupils
Page 11	Addition of reference to public transport and water safety
Page 13	Addition of post appointment ongoing staff monitoring
Page 14	Addition of reference to staff wellbeing promotion
Page 18	Addition of reference to the need for sensitivity when responding to allegations.
Page 32	MACE link edited Additional bullet point added - Has experienced multiple suspensions, is at risk of being permanently excluded from schools, colleges and in alternative provision or a pupil referral unit.
Page 37	Reference to Senior Mental Health Lead funded training deleted as the scheme has closed.
Page 40	SW Child protection processes link edited
Page 41	Link to NSPCC Viewing Generative AI and children's safety in the round research added
Page 41	Guidance relating to AI and technology in schools added